

MaineDOT Wildlife Passage Planning using past Experience

Monitoring structures throughout the MaineDOT
Transportation infrastructure

MaineDOT has 2 projects that include new highways on new location. We reviewed existing structures, some intentionally installed and some are existing culverts and bridges.

MaineDOT Wildlife Passage Planning using past Experience

Monitoring structures throughout the MaineDOT Transportation infrastructure

This will recap what strategies MaineDOT has used and what we be planning for future projects

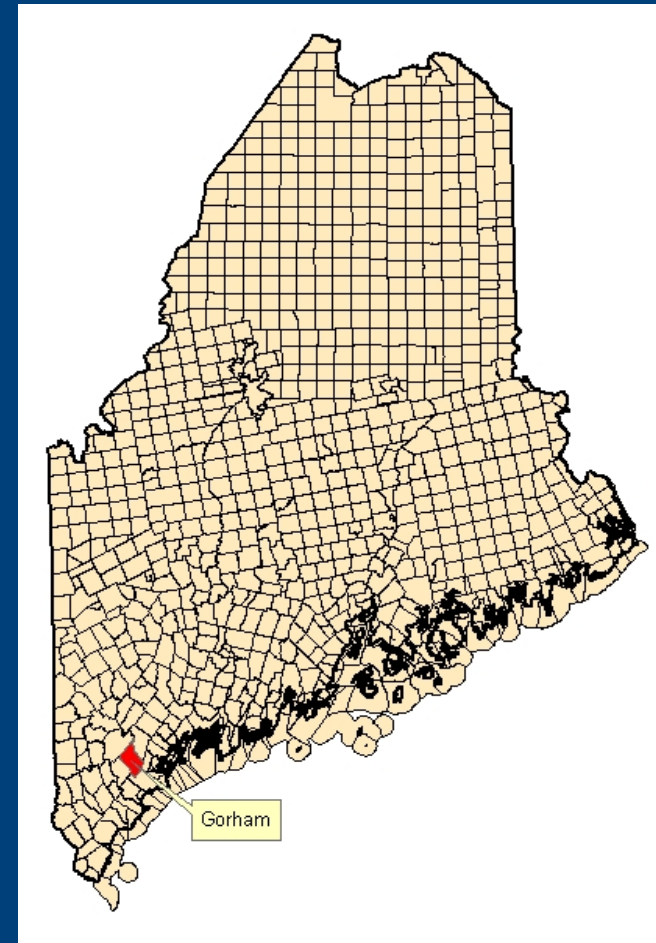
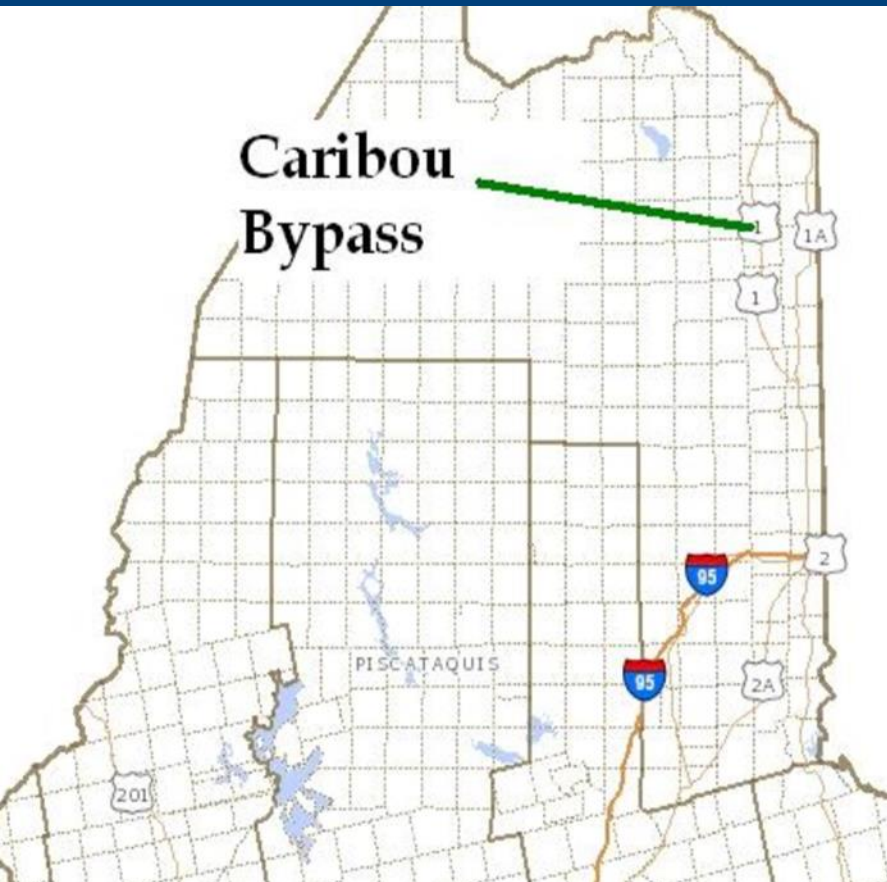
MaineDOT has found that crossings fall into a variety of different categories

1. Bridges
 - a. Fenced
 - b. Unfenced
2. Large culverts
 - a. Fenced
 - b. Unfenced
3. Small culverts



Use of Wildlife Underpasses

- New 2 lane highway built north of Caribou.
- Mostly in farm fields



- Longer bridge overpasses
- A 2.4 m (8 foot) fence was
- installed 0.8 km (0.5 mile)

1. Bridges

1. Fenced

2. Unfenced

2. Large culverts

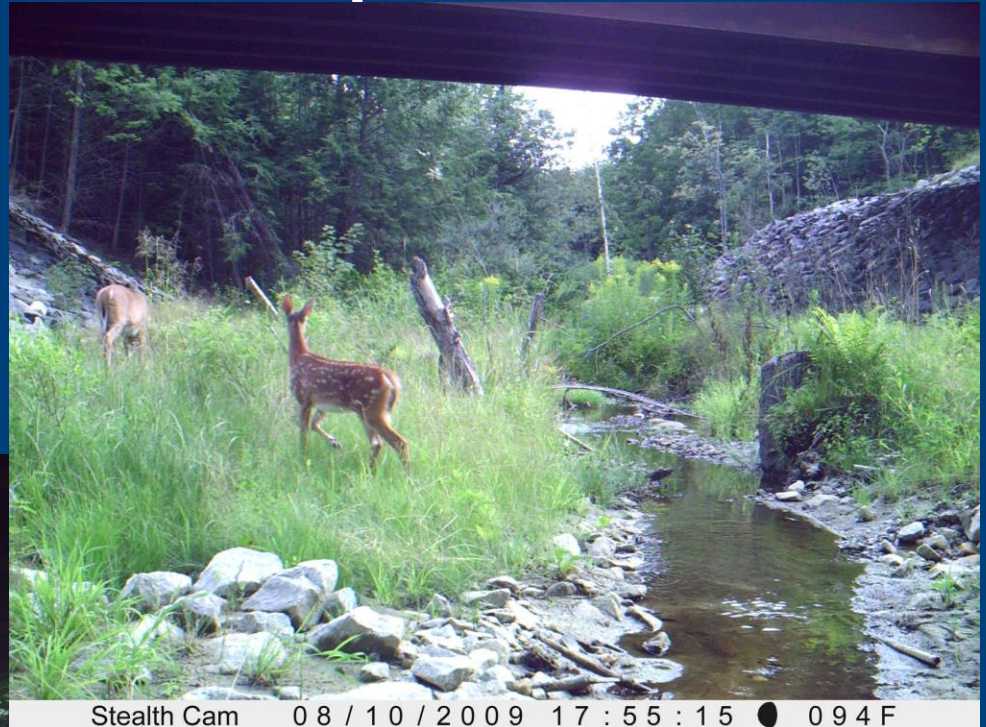
a. Fenced



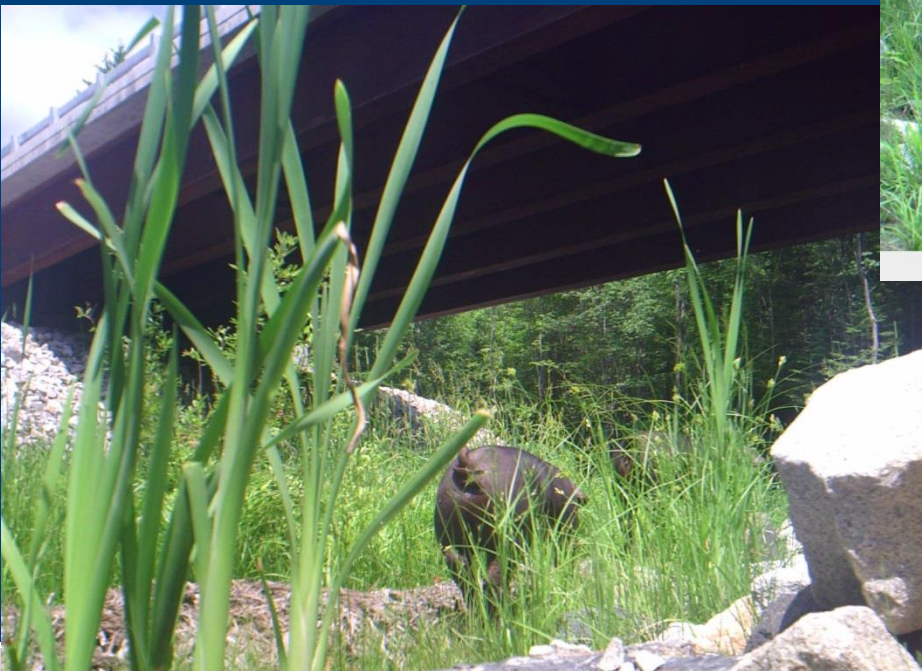
Use of Wildlife Underpasses

Gorham, Maine

Longer bridge
overpasses



Stealth Cam 08 / 10 / 2009 17 : 55 : 15 094 F



Stealth Cam 06 / 27 / 2009 13 : 48 : 12 091 F

Integrity - Competence - Service

1. Bridges

1. Fenced

2. Unfenced

2. Large culverts

a. Fenced

b. Unfenced



Caribou Box culvert – Mixed used at trail head (High use by snow machines and ATVs-

2015-01-23 6:28:48 PM M 1/3

20°F



2015-06-01 7:45:19 AM M 2/3

47°F



HC500 HYPERFIRE

Ellsworth

1. Bridges

1. Fenced

2. Unfenced

2. Large culverts



1. Bridges

1. Fenced

2. Unfenced



Fenced Culverts

MaineDOT has installed for various crossings, from 48 to 96 inches in diameter. The target species for these are medium to small animals, size of a black bear and smaller

1. Large culverts

a. Fenced

b. Unfenced

Caribou



2014-09-20 10:15:18 AM M 3/3 54°F



HC600 HYPERFIRE

RECONYX

1. Large culverts

Caribou

a. Fenced

Species Observed

Black Bear
Canada lynx
Coyote
Domestic Cat
Domestic dog
Chipmunk
Fox
Fisher
Pine Martin
Raccoon
Skunk

Weasel
White tail deer
Woodchuck

1. Large culverts

C

a. Fenced

b. Unfenced





26°F

HC600 HYPERFIRE

RECONYX



Integrity

HC600 HYPERFIRE

RECONYX

Caribou

- 1.4 (54 inch) high culvert with concrete pad as shelf
(Cameras at each end have shown through passage)



Caribou

- 1.2 (48 inch) round culvert use by large and small



Caribou

- 1.2 m (48 inch) round culvert use by large and small



Caribou

- 1.4 (54 inch) high culvert with concrete pad as shelf winter use (Cameras at each end have shown through passage)



Caribou

Not meant for moose



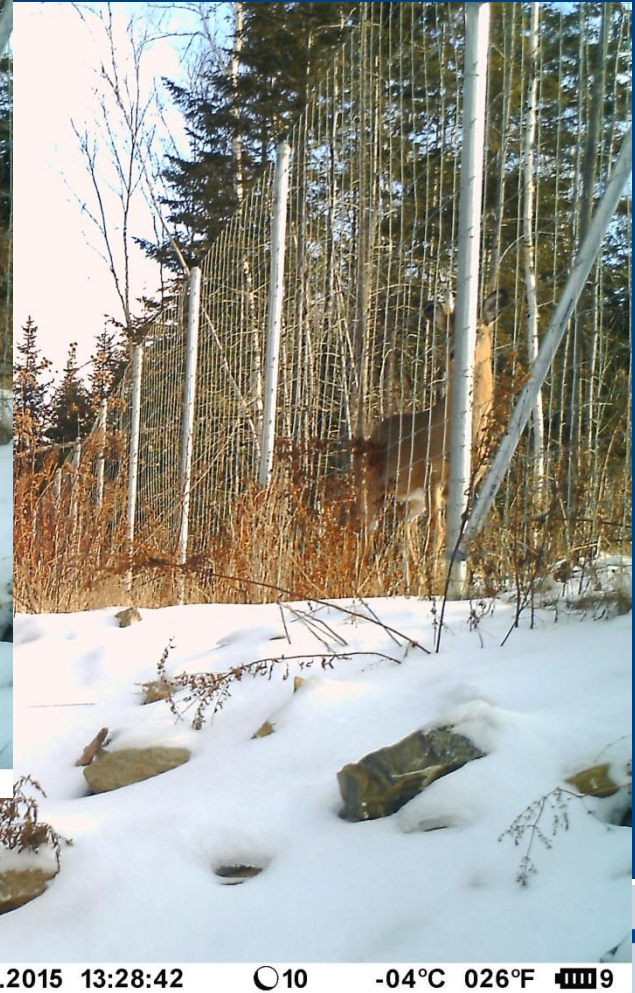
Attempts to get over 8 foot fence

Caribou in Caribou



Observed attempts to get over 8 foot fence

Caribou in Caribou Photos are 2 minutes apart



Use of Wildlife Underpasses

Dixfield, Maine

1.2 m (40 inch)

Culvert that are

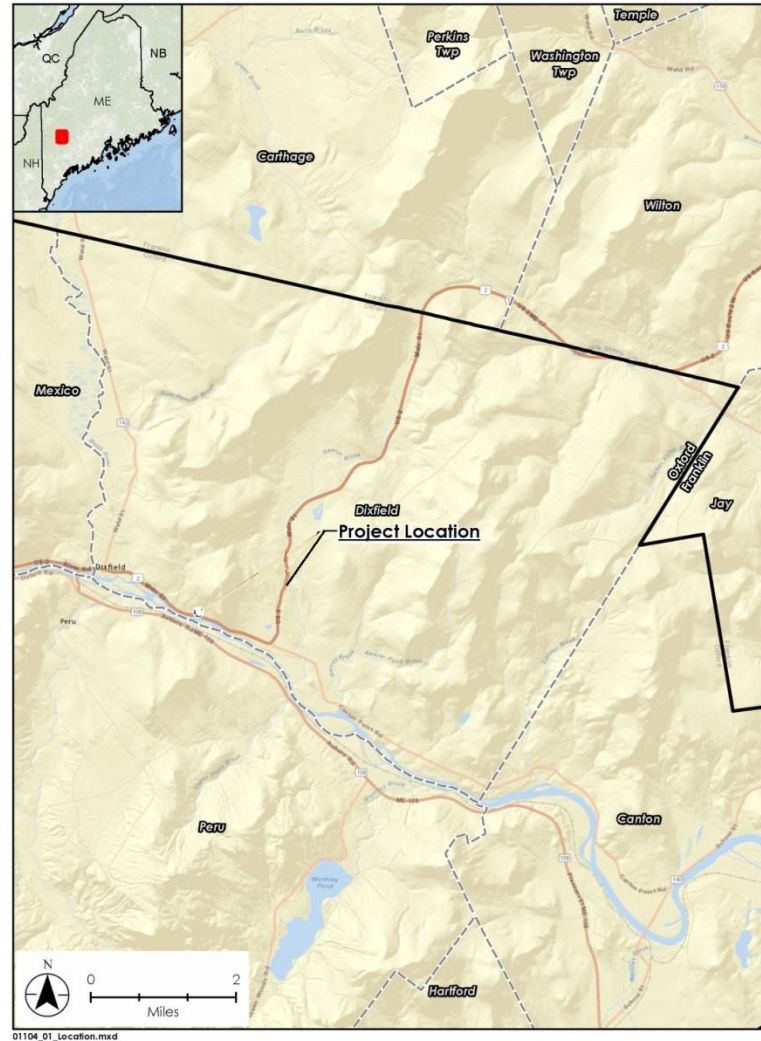
overflow cul-

verts for a

brook

Dry

Un-fenced



Use of Wildlife Culverts

Dixfield, Maine

2010-11-25 2:53:11 PM M 1/3

36°F



HC500 HYPERFIRE



Use of Wildlife Culverts

Dixfield, Maine

- Species observed:

Mink

Weasel,

Raccoon

Skunk

Chipmunk

Mouse

Shrew

Yellow belly snake

Un-identified Bird

Groundhog

House cat

Use of Wildlife Culverts

Dixfield, Maine



Use of Wildlife Culverts

Dixfield, Maine



Use of Unfenced Culverts

Small Culverts (18 to 24 inches) , Southern
Maine,



Use of Unfenced Culverts

Southern Maine, Maine

- Species observed (incomplete)
- Chipmunk
- Groundhog.
- Virginia possum
- New England Cottontail
- Red Fox
- Coyote

Use of Small Culverts

Southern Maine,

2015-06-02 5:30:43 AM M 1/3

45°F



2016-06-23 8:55:17 PM M 3/3

62°F



RECONYX

RECONYX

HC600 HYPERFIRE



MaineDOT

Use of Culverts

Southern Maine, Maine

2015-05-20 12:56:57 AM M 3/3

54°F

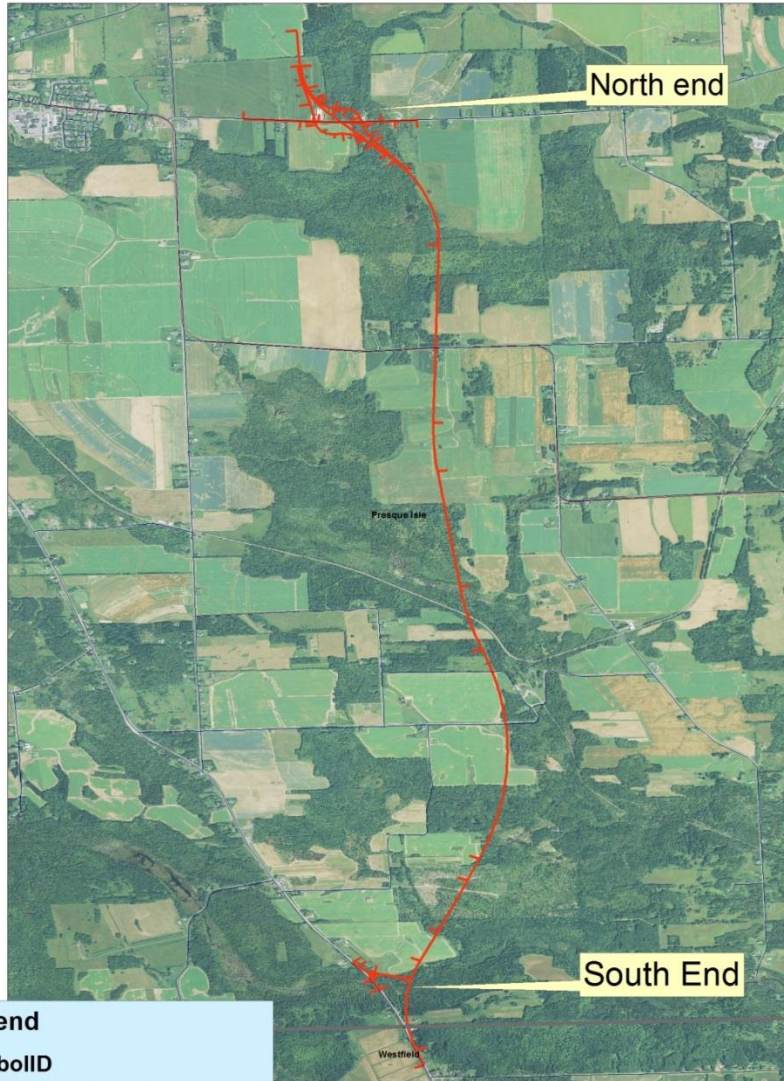


HC600 HYPERFIRE

RECONYX



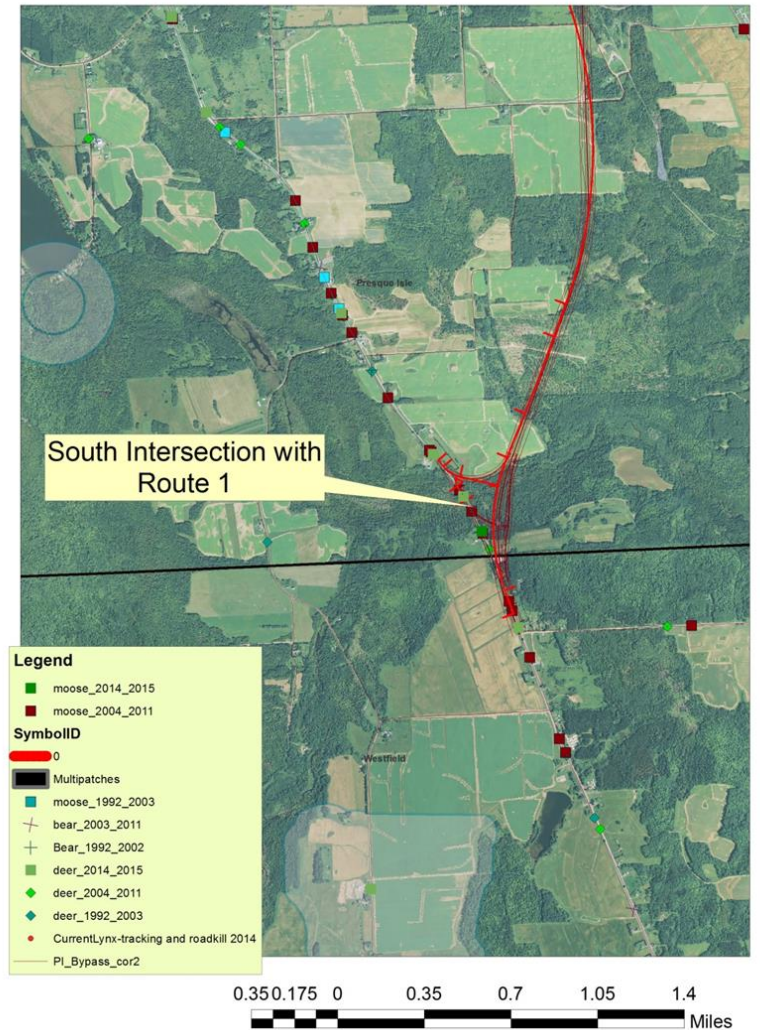
Presque Isle Bypass Segment 1, Phase 2 Location and landcover map



Presque Isle Bypass area

Presque Isle

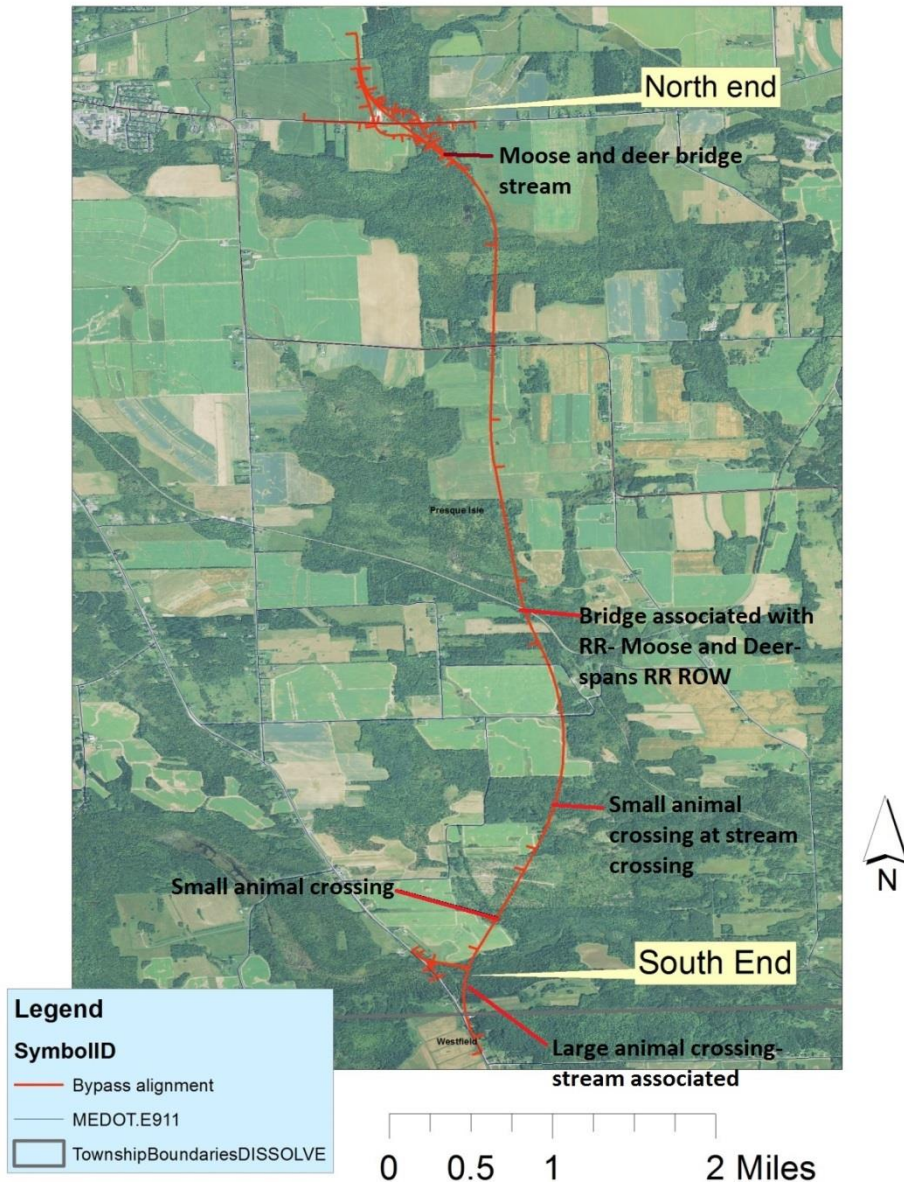
Presque Isle Bypass Large Animal Crash Hotspot WIN 6462

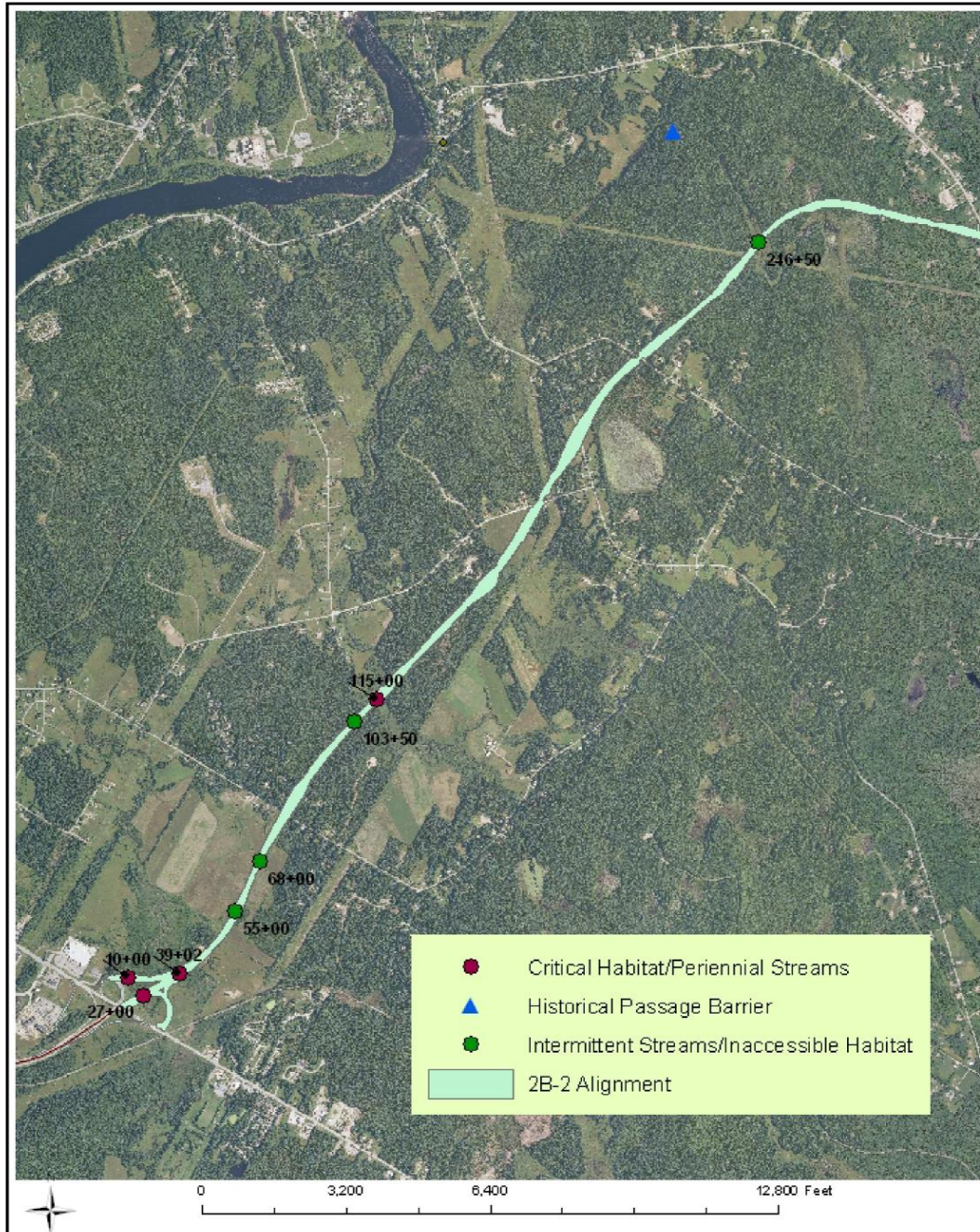


Presque Isle Bypass Segment 1, Phase 2

Location and landcover map

Presque Isle Bypass area





Brewer- Eddington Connector