

# 2016 Northeast Transportation and Wildlife Conference



Essex County SWCD





# Spring Flooding Westport



# Farm Damage ACRF





# Ticonderoga Road Damage





# Old Dump Westport





# Whiteface Mountain 2X in 2011





# Lewis Spruce Mill Brook





# Jay Upper Styles Brook





# Elizabethtown Footbridge





# Keene





# Rivermede



# 2011 Stream Evaluations





# FEMA

- \$500,000
- 10 sites
- Debris removal along stream banks effected by Irene.



- Putnam Creek





# Keene

During

Summer 2012



Before



After



# Moriah





# Elizabethtown



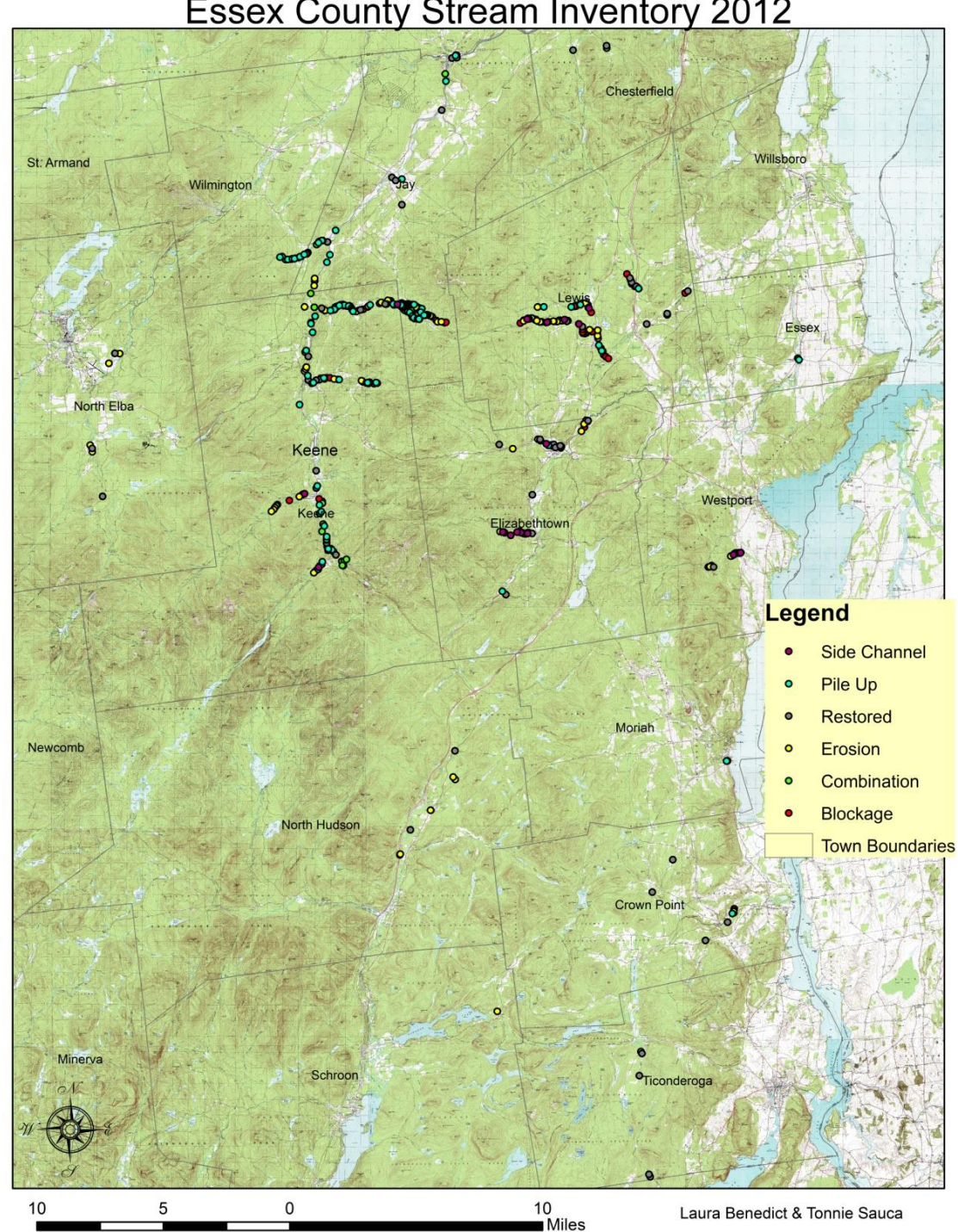


# Channel Inventory

- 15 Stream segments affected from Irene.

Rated them based on following criteria for:

1. Area
2. Bank stability
3. Percent vegetation
4. Proximity to infrastructure
5. Accessibility





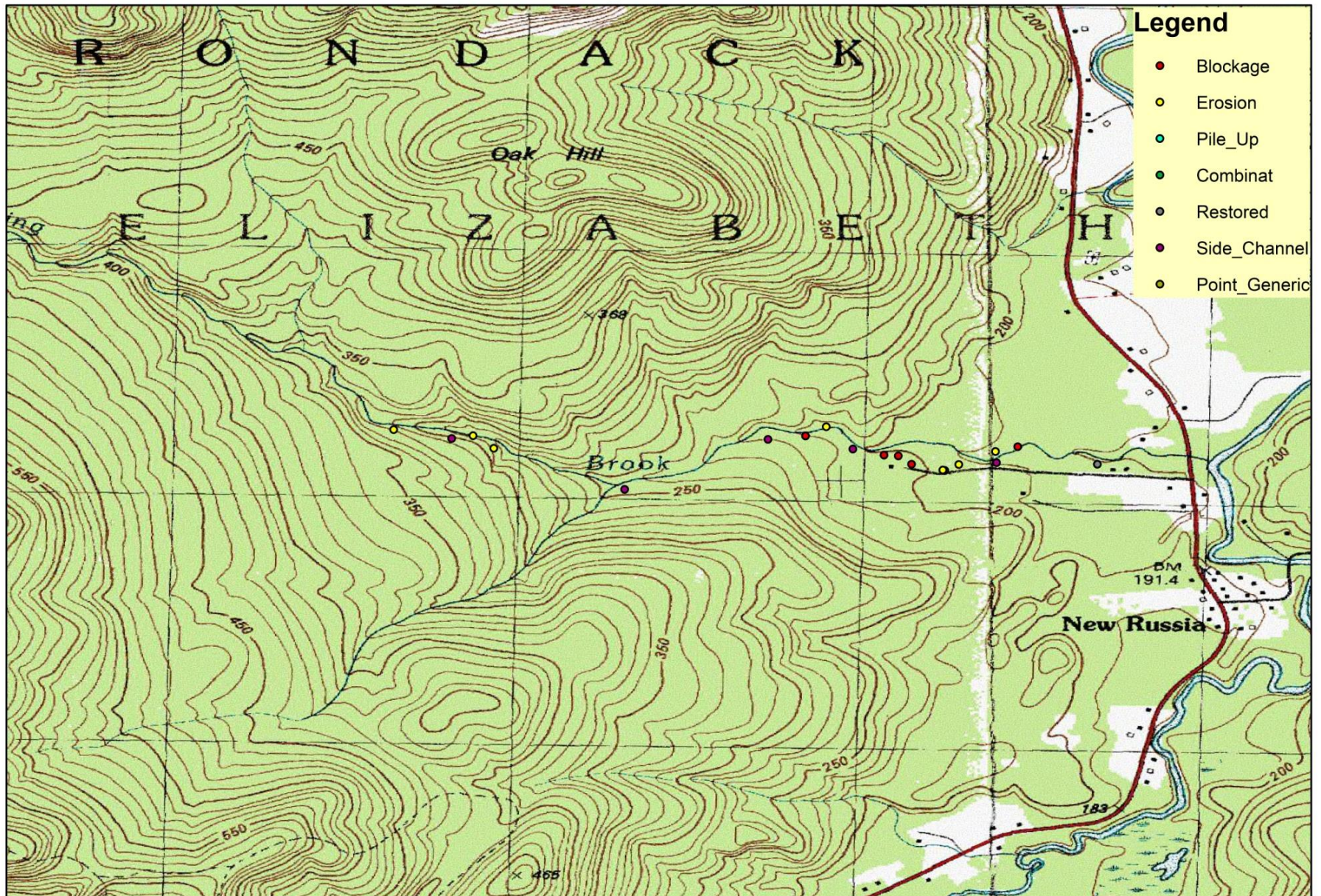


Left: Spruce Mill Brook Town of Lewis

Above: Roaring Brook Town of Elizabethtown



# Roaring Brook



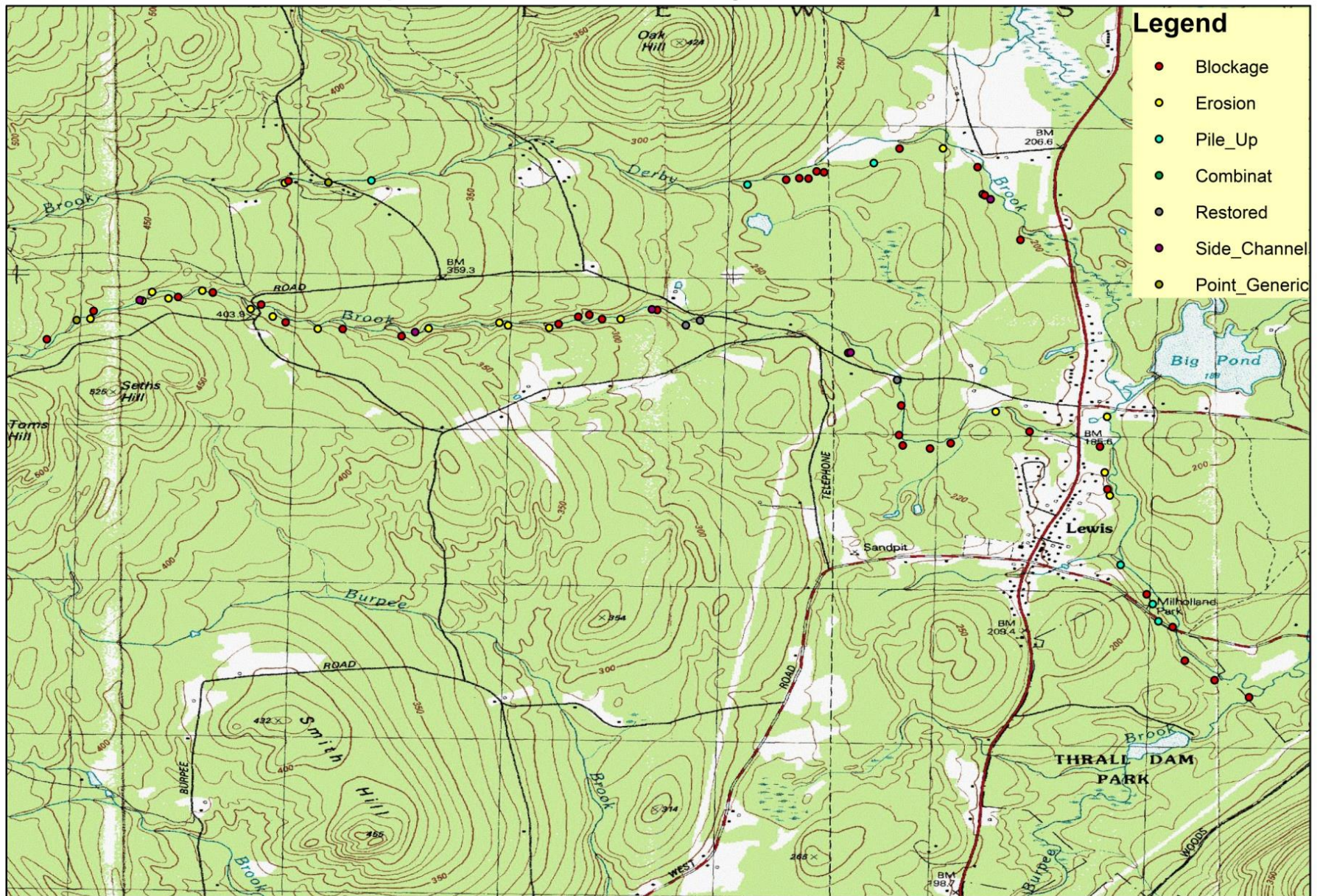
0.5 0.25 0 0.5 Miles



Laura Benedict  
Tonnie Sauca



# Sprucemill and Derby Brook



- Legend**
- Blockage
  - Erosion
  - Pile\_Up
  - Combinat
  - Restored
  - Side\_Channel
  - Point\_Generic



Laura Benedict  
Tonnie Sauca





## Rivermede Stream Restoration

Collaboration of Essex County  
SWCD Trout Unlimited,  
Ausable River Ass. & US Fish  
& Wildlife Service

- 2,800 feet of riverbank restoration
  - 3,000 willow stakes planted for bank stabilization
  - 3 acres seeded for riparian buffer
- Over 15 years of planning  
-\$130,000 total project cost







## RiverMede Workshop

80 Attendees from various groups  
DEC, APA, NYSDOT, Ag&Markets,  
SWCD, US Fish & Wildlife, Ausable  
Club, local contractors, Town  
Supervisors, Town & Highway  
Dept., Essex Co. DPW, Trout  
Unlimited, Ausable River Ass.,  
Boquet River Ass., Adirondack  
Wild,& public.

## Stream Inventory

- interns inventoried 10 streams in the county to rank them on which ones have the most blockages or erosion on their stream banks, and need cleanup.





# DEC Stream Grant

- ▣ 10 Projects
- ▣ 500,000
- ▣ Federal EWP funding
- ▣ USFWS, TU, ASRA, BRASS partners
- ▣ Landowner in-kind
- ▣ Local Municipal involvement



# Land of Make Believe





# Jay Bridges







2014



Spring 2015



Spring 2016



# Gulf Brook





# Gulf Brook During Construction





# Gulf Brook Complete





# Styles Brook





# Styles Brook Complete





# Putnam Brook





# Putnam Brook Complete





# John's Brook





# John's Brook Complete





# Roaring Brook New Russia





# Roaring Brook Complete



Summer  
2014



Summer  
2014



Spring  
2015



# Ausable Forks





# Funding from 2011

- ▣ 500,000 DEC grant
- ▣ 1.7 million HMG funding John's Brook and Petro Dam
- ▣ 35,000 Stream Intervention training
- ▣ 9 million Jay-Keene Flood Plan
- ▣ 750,000 USFWS Habitat projects, ASRA, TNC
- ▣ 100,000 NYS DOS planning grant
- ▣ 700,000 NRCS EWP
- ▣ 60,000 ACRF
- ▣ ???? Millions FEMA



# Engineered Log Jam



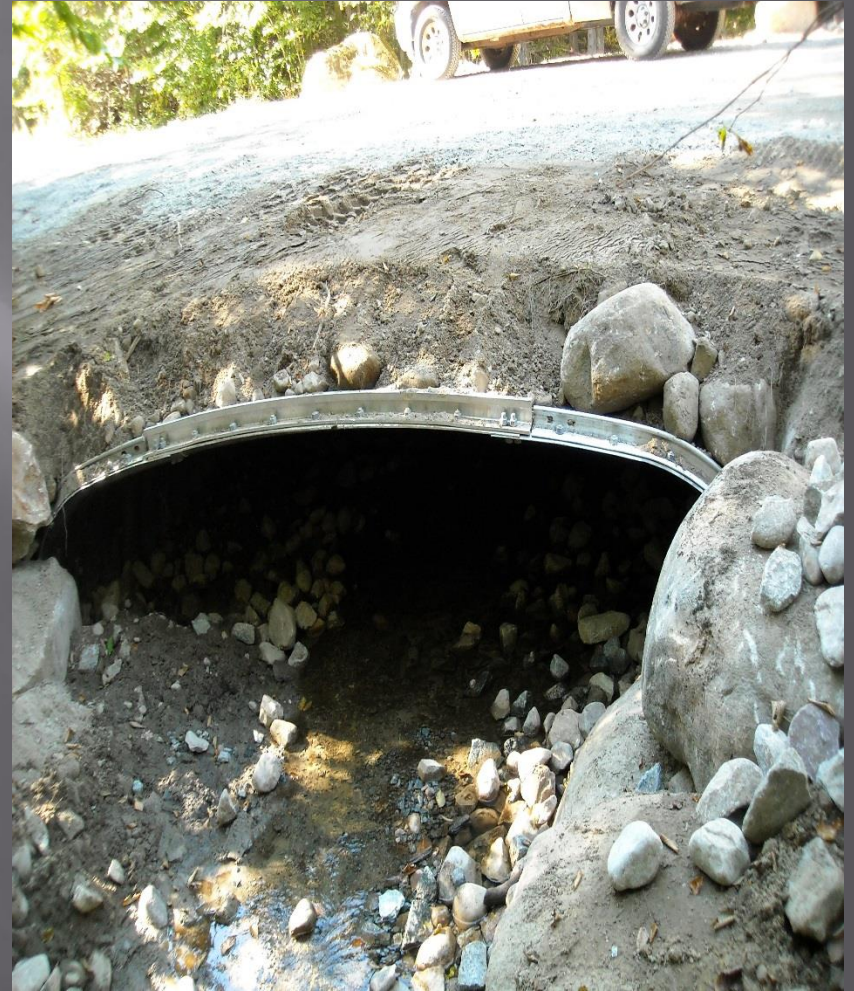


# Roaring Brook





# Lenny Preston





# River Road





# Johanson Pool 1





# Johanson Pool 2





# St Hueberts





# Elizabethtown Fish & Game







Any Questions