



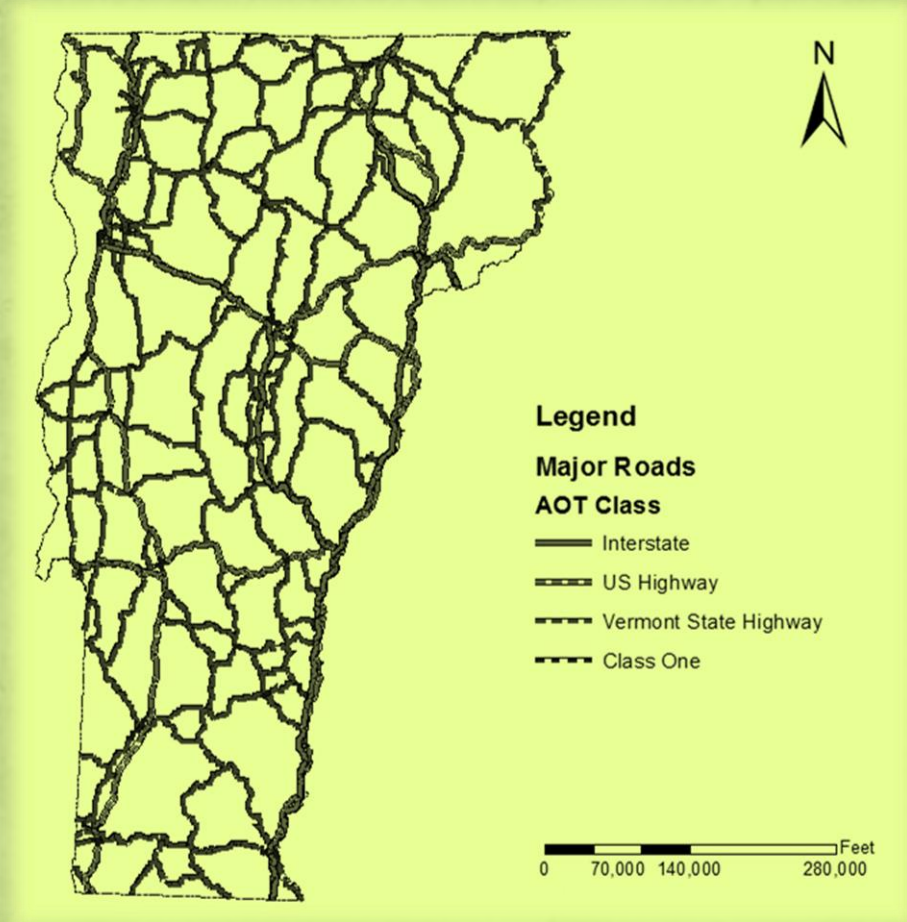
Practices That Affect/ Promote Pollinator Habitat

Glenn Gingras, VTrans Senior Biologist
NETWC-September 2016



VTrans Lands Management

- 2709 miles of state highway system
- 772 miles national highway system
- 30 Park and Ride Facilities
- 305 Miles of State Owned Operating Rail System
- 10 State-Owned Airports



Overview of Existing VTrans Activities which have an affect on Pollinators

Maintenance Practices

- Mowing, Riparian Buffer BMPs

Planning/Project Development

- Landscaping (seeding/plantings)
- Collaboration



Maintenance Practices

Mowing BMPs Roads (2015)

- 2015 - 15,254 acres mowed (VTrans 2016 Fact Book)
- Roughly \$ 1.2-2 million
- Annually mow limited access highways 30' clear zone, every 3rd year mow additional areas
- All mowing after June 1; try to mow everything prior to Mid July
- 2015-2016 -Added language for managers to consider pollinator habitat



Maintenance Practices

Mowing practices State Owned Airports

Mow all runway and taxiway safety areas to a height of no more than six inches according to current FAA regulations for safety.

All other areas un-mowed between April 1st and August 1st



Rutland Regional Airport

Maintenance Practices

Other Vegetation Management

Riparian Buffer Tree and Brush Removal BMP (2007)

Cut only what is necessary for safety of travelling public

Mowing BMPs Recently Added With Specific Reference to Pollinators

References Presidential Memorandum regarding Pollinator Habitat

Conduct inventories of pollinator habitat (if resources allow)

Leave Milkweed and Other Wildflower Patches

On 3rd Year Mow leaving strips native vegetation

Start Mowing around June 1 try to avoid Mid July to Sept (Monarchs)

Consider Introducing Wildflower Seeds to Steep Slopes



Planning and Project Development

Landscape

Work program FFY 2017 addressing BMPs to promote pollinators

Implement BMPs from FHWA Pollinator and Roadsides document

Advisory group- select alternative BMPs to benefit pollinators

Native plantings

Planning and Project Development

Collaboration

Work with VT Fish and Wildlife-Wildlife Action Plan

Several Species of Bumblebees, Butterflies, Moths

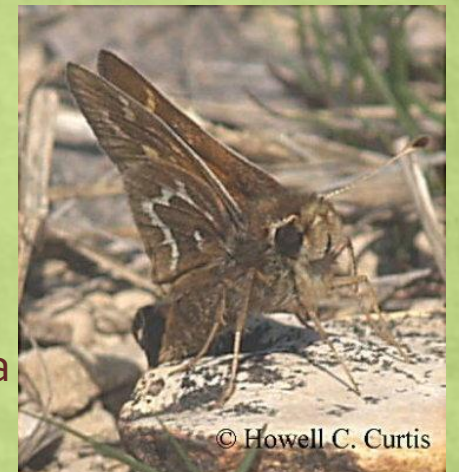
Nesting, foraging habitat needs



Rusty patch bumble bee



Monarch Butterfly



Cobweb
Skipper
(*Hesperia
metea*)

© Howell C. Curtis

Potential Conflicts

Getting consistency for mowing statewide across divisions

Invasive Species

Public perception of not mowing

Conclusion

VTrans will continue modifications to existing practices, details, BMPs

VTrans will be working on developing an Integrated Vegetation Management Plan in the next couple of years

VTrans will continue collaboration with stakeholders

Opportunities exist to do good things for pollinators