



# Assessment, Outreach, Prioritization, Restoration

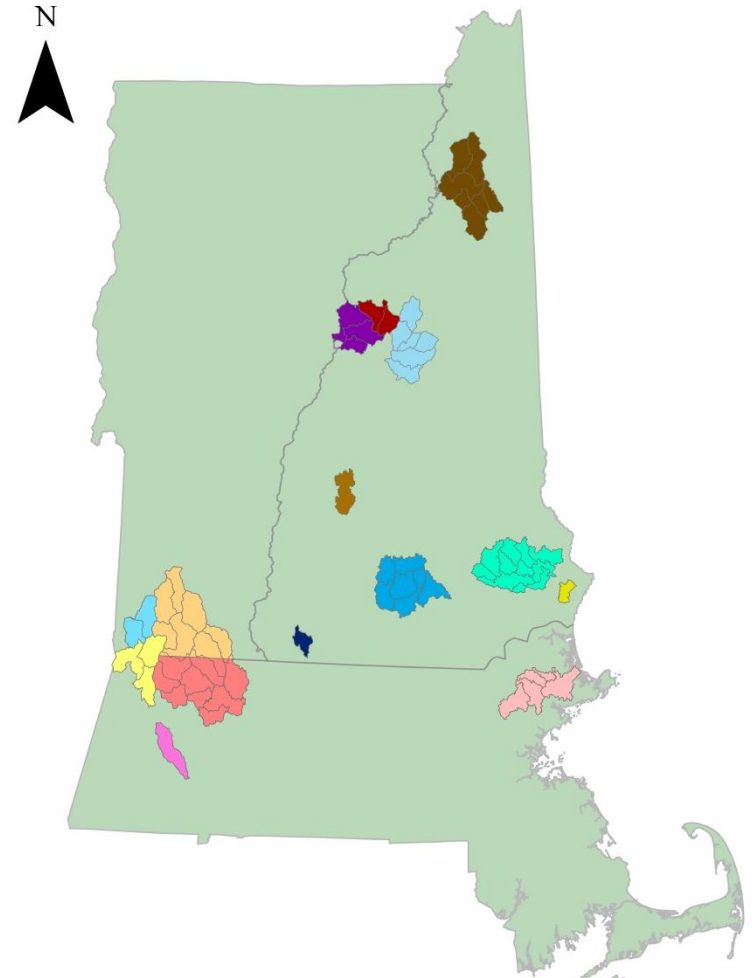
Trout Unlimited's process in the Willowemoc Watershed, Catskills, NY  
Erin Rodgers, Ph.D.



To protect, conserve, and restore North America's coldwater fisheries and their watersheds.

# What we do

- Partnerships with municipalities, states agencies, federal agencies, local and national non-profits, private landowners, citizen groups, and universities.
- Flexible and beyond geopolitical boundaries.
- Work at all stages of restoration.
- Many specializations.





# Willowemoc Watershed, Catskills



## 2015

- Secured funding to complete barrier assessment in lower watershed.
- Completed barrier assessment in lower watershed from Livingston Manor to Roscoe – 55 crossings assessed.
- Secured funding to complete barrier assessment in upper watershed.

## 2016

- Completed barrier assessment in middle and upper watershed from Livingston Manor upstream – 77 crossings assessed.
- Entered all data into NAACC database.
- Completed AOP, hydraulic and geomorphic modeling on all crossings.
- Analyzed data and developed draft priority list.
- Met with Town of Rockland, Region 3 DEC Fisheries, Town of Neversink and Sullivan County Soil and Water Conservation District manager to discuss priorities.
- Visited and photographed priority crossings.



- North Atlantic Aquatic Connectivity Collaborative
- Supplemental information for geomorphic and hydraulic modeling
  - Assessment by watershed, county, town
  - AOP, geomorphic, and hydraulic assessment

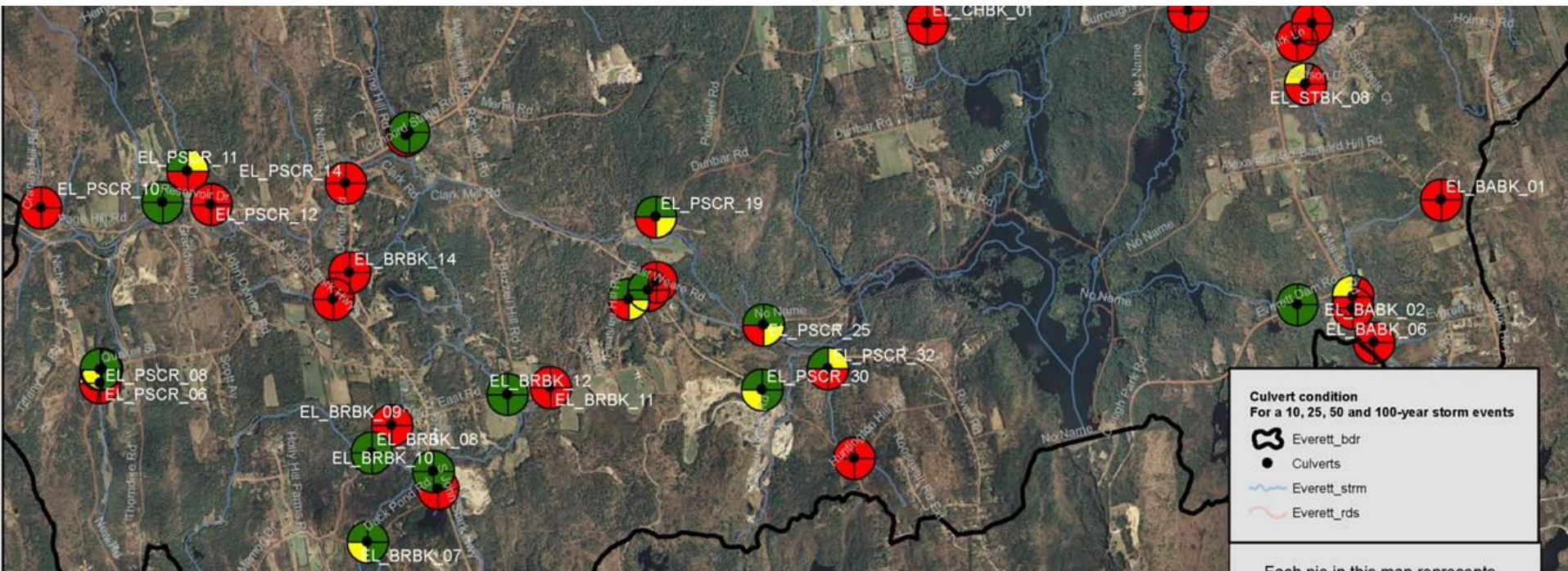




- Town Selectboard, Conservation District, Highway Supervisor, state agency regional/district staff
- Find the intersection of common goals
- Landowner outreach



# Prioritization



- Metrics used for Prioritization: AOP ranking, hydraulic compatibility ranking, geomorphic compatibility ranking, # of upstream miles to next barrier, perennial vs. intermittent, brook trout presence, water quality classification
- Emergency services routing, upstream/downstream property, regular maintenance/replacement costs





- Project management
- Design and engineering
- Construction oversight





## In New England and New York

- 5400 crossings assessed and modeled
- Over 30 towns engaged
- 21 barriers removed
- 74 miles reconnected habitat

*Next presenter*