



Not Just Chickens Cross Roads

Barbara Charry, *Conservation Biologist/GIS Manager, Maine Audubon*

April 3, 2015



Wildlife Road Watch



Wildlife Road Watch



[Home](#) [News](#) [Blogs](#) [Maps](#) [Data](#) [Animals](#) [About](#)

Welcome to the Maine Audubon Wildlife Road Watch

Submitted by BarbaraCharry on April 4, 2012 - 6:55pm

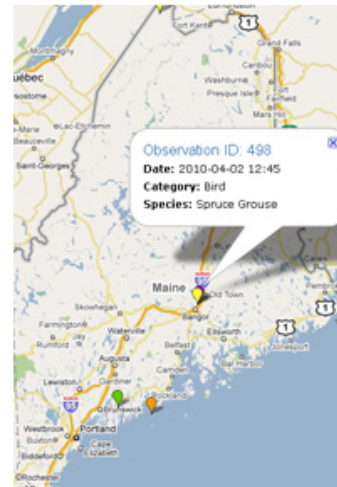
The Maine Audubon Wildlife Road Watch is a web-based map and database designed to record your observations of road-side and road-killed wildlife.

Information about where wildlife attempt to cross roads, what animals are involved, on what kinds of roads are collisions frequent, and other data can help inform policy, management, and financial investment in reducing road-kill and habitat fragmentation. Maine Audubon scientists will use the data to improve our collective understanding of where wildlife attempt to cross roads and what we can do to reduce road-kill and increase safety for people and wildlife.

Click [here](#) to learn about the 4 ways you can participate.

Start contributing your own observations:

1. **Create an account** to get started.



Wildlife Road Watch

- [Sponsors](#)
- [Contact Us](#)

User login

Username *

Password *

[Create new account](#)

[Request new password](#)

wildlifecrossing.net/maine

[Read more](#)

Recent Field Blogs

[June Road Watch, seen Biscaya](#)

Animal Need to Move

(Habitat must remain connected)



Food

Shelter

Water

Rest

Nesting

Breeding

Dispersal

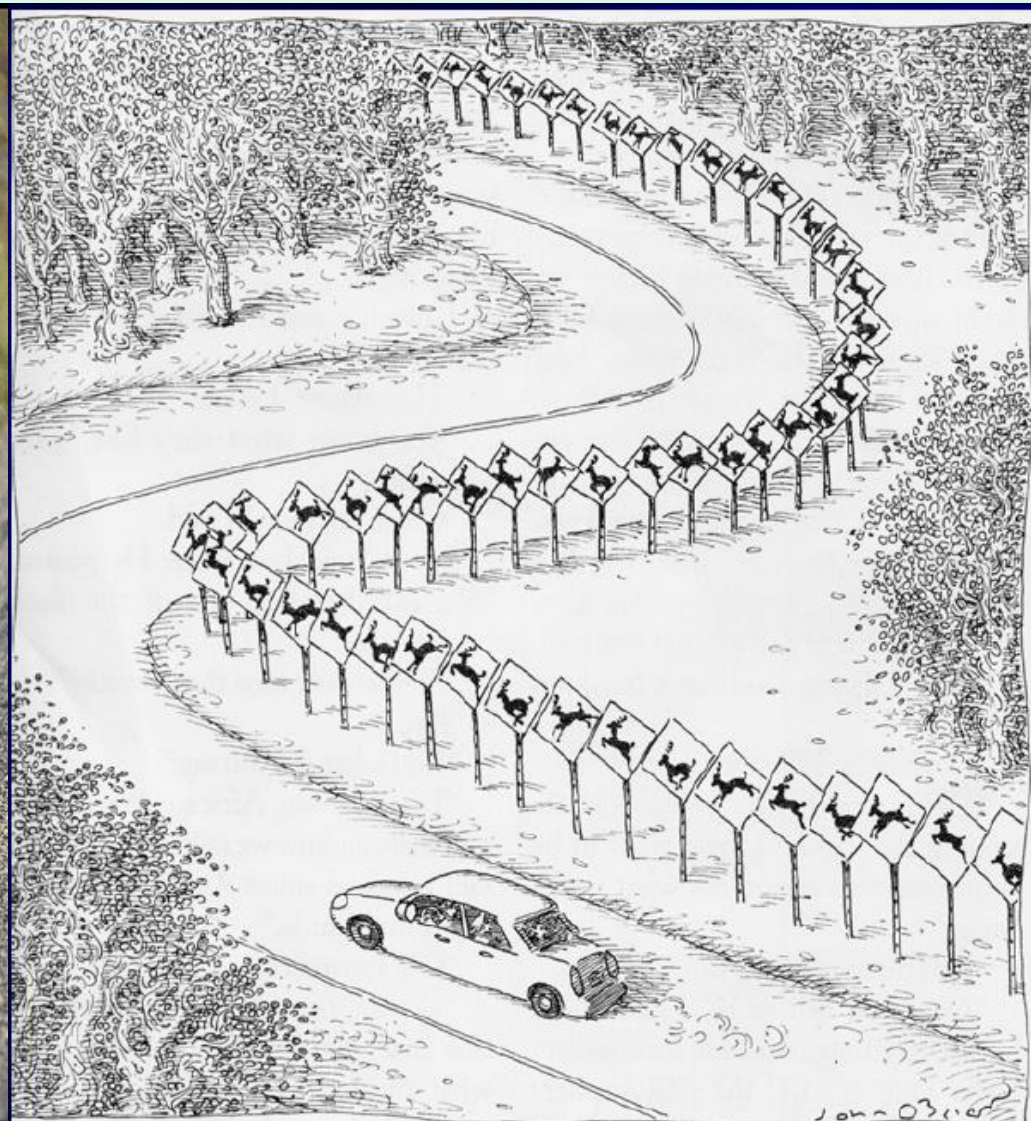


Smaller Populations

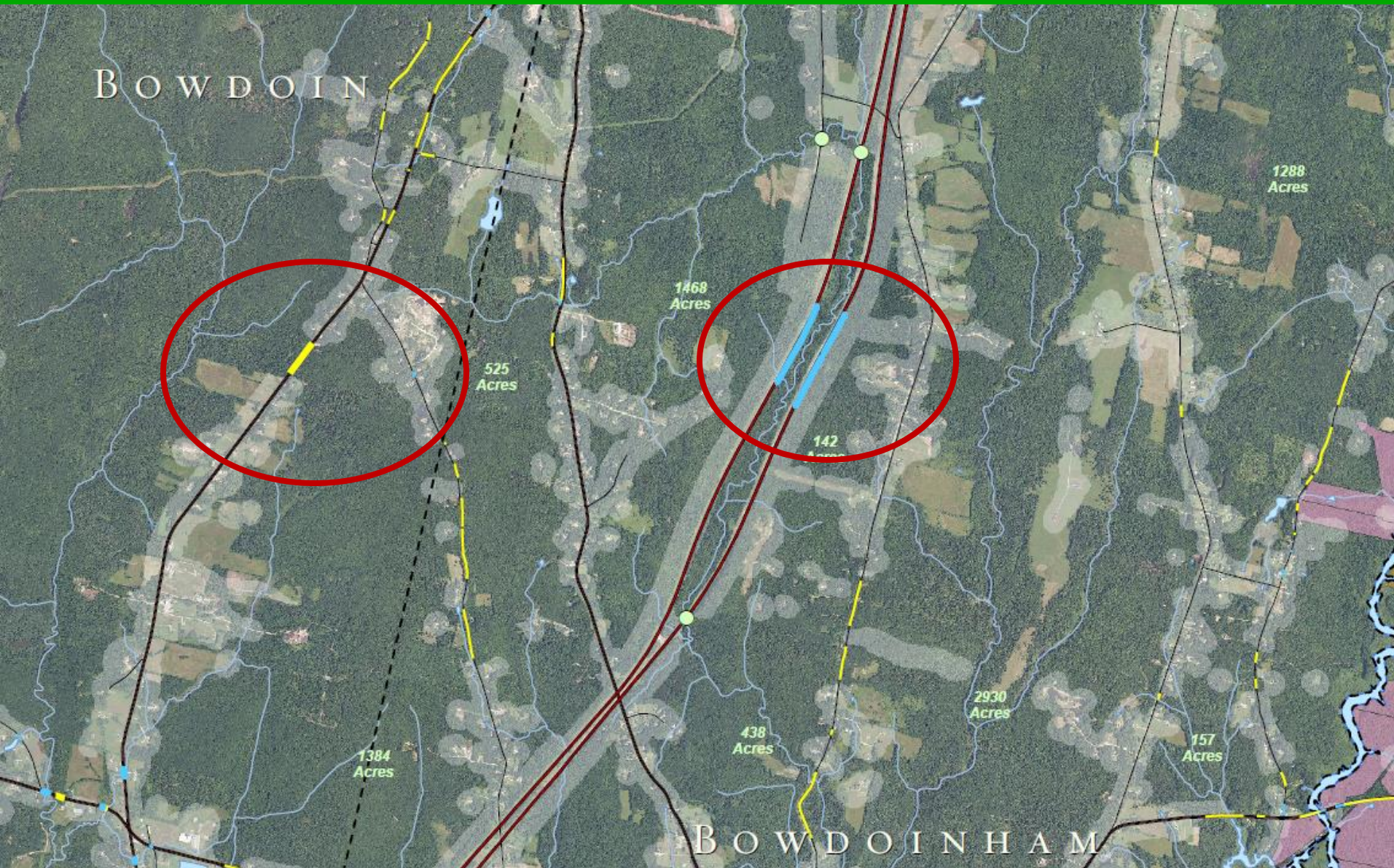
Population Loss/Extinction



There are Solutions – But Where?



BWH Habitat Connectors

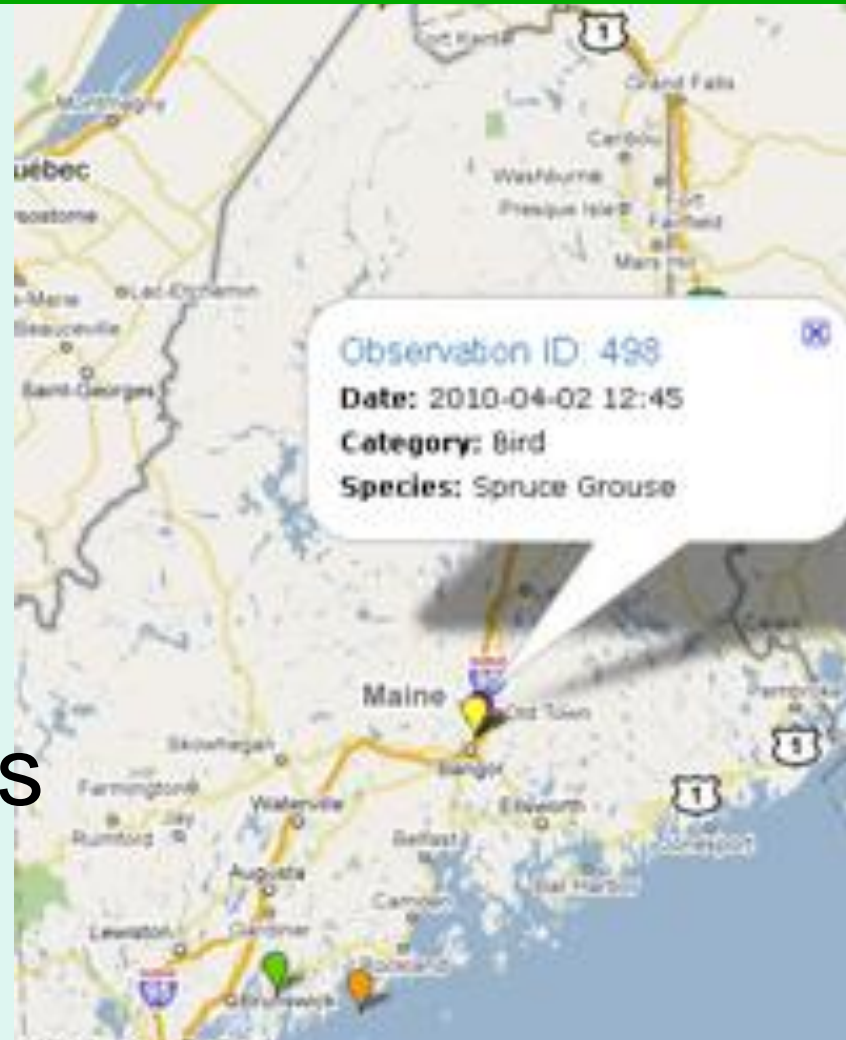


Help Track Wildlife Movement

Sign-Up on the Web:

Wildlife Road Watch

**Citizen Science for
Wildlife-Friendly Roads**



maineaudubon.org/wildlife-habitat/wildlife-road-watch/

Answers We Want

- Verify BWH Habitat Connectors
- Where might Endangered Species cross?
- Or species that use similar habitat?
- What Habitat Types?
- What Road Characteristics?
- Where are “Hot Spots”?



Four Ways to Participate

1. **Random Roadside Observations** -Statewide
2. **Adopt A Road** – pick your own route
3. **Endangered Species Road Surveys** – assigned routes mostly in York County
4. **Western Maine Mountains** – assigned routes Oxford Franklin & Somerset Counties



Create Dead Wildlife Observation

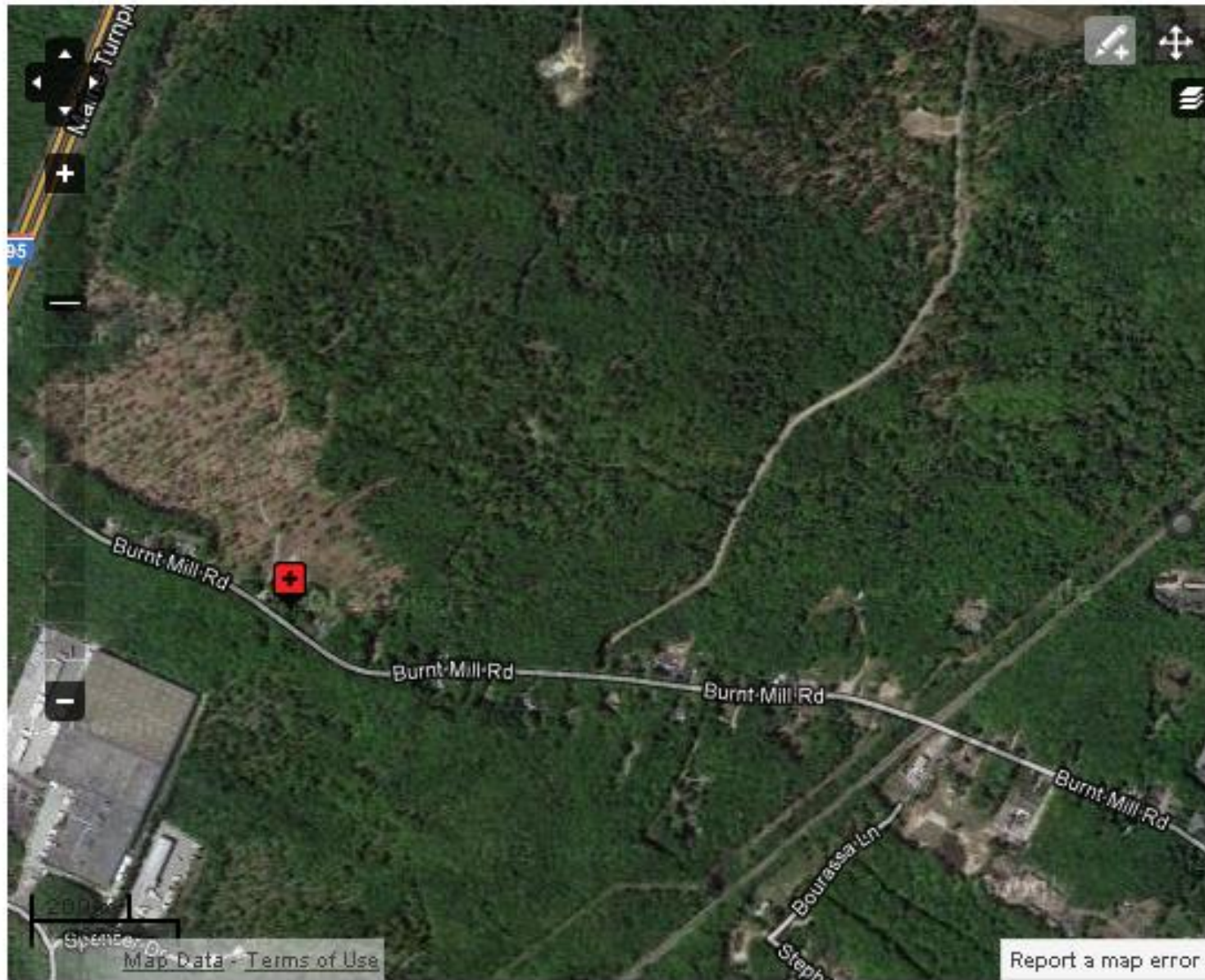
Add a new dead animal observation.

- ▶ WHAT: Observation
- ▶ MONITORING: Adopt a Road Survey Route
- ▶ WHERE: Location
- ▶ WHEN: Observation Date and Time
- ▶ VISUAL: Photo Uploads
- ▼ FIELD NOTES: Additional Fields

- ▶ Animal Count
- ▶ Animal Specific Information
- ▶ Roadway Specific Information

Field Notes

Observation Location



Post Pictures

▼ VISUAL: Photo Uploads

Image

Upload an image of this observation. Rearrange the image to show the best one first, as that becomes a "representative" image for the observation.

Add a new file

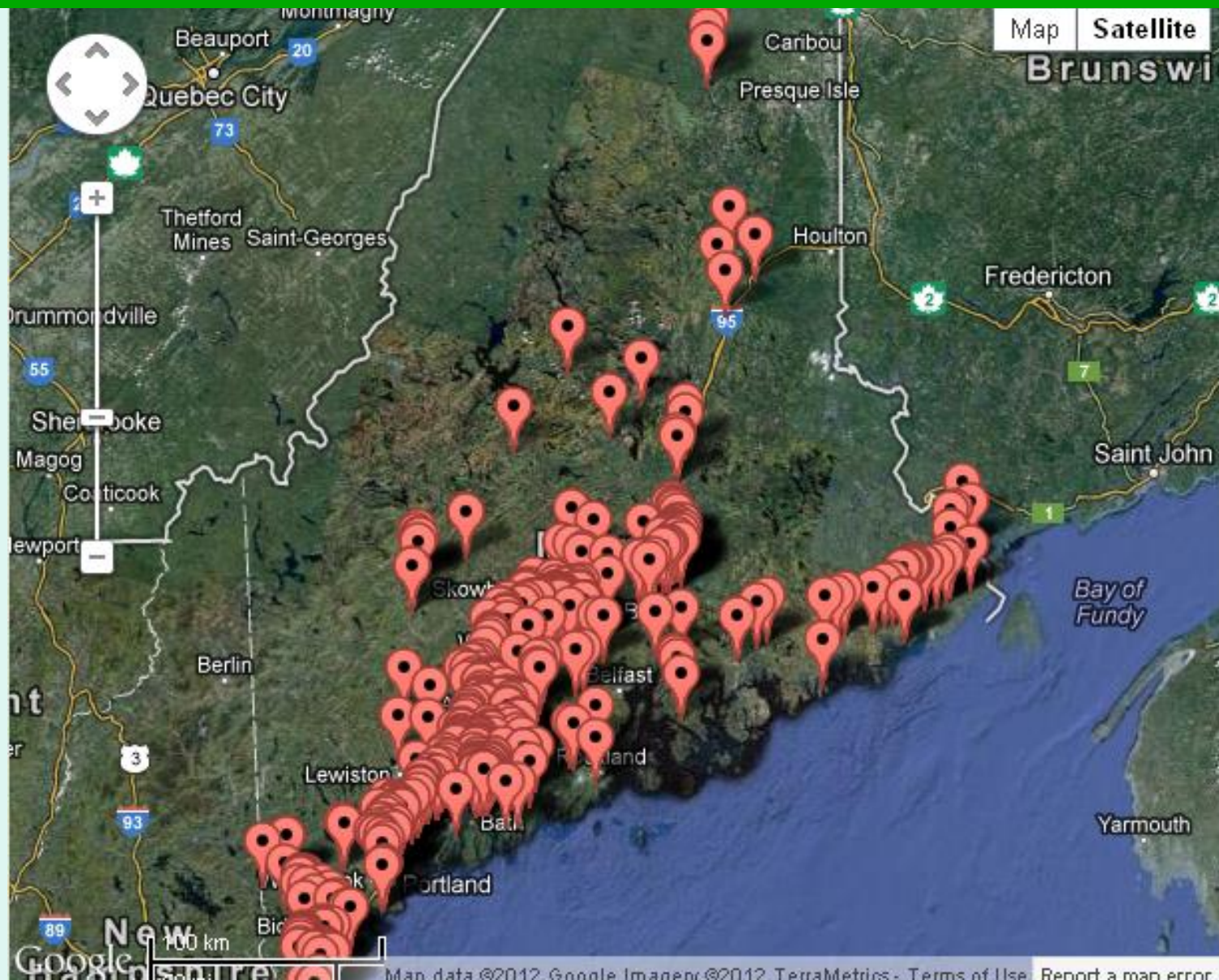
No file chosen

Files must be less than 8 MB.

Allowed file types: **png gif jpg jpeg**.



View Observations



Regular Targeted Surveys

Create Adopt a Road Route

Your route will be available for linking to observations once the website administrator verifies the route. You will be emailed when this is complete and your route is available.

Name *



Create No Wildlife Observation

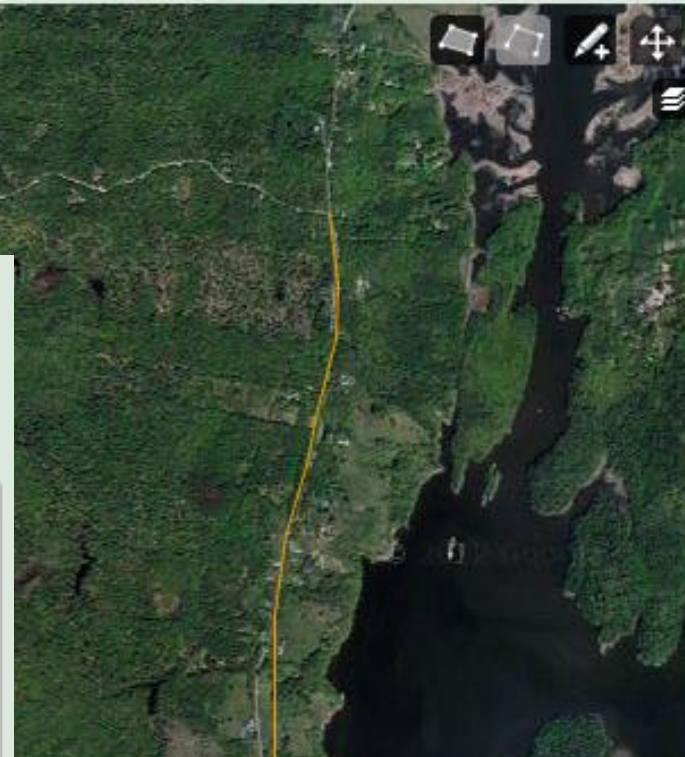
Add record of an Adopt A Road Route survey with no wildlife observed.

▼ MONITORING: Adopt a Road Survey Route

Adopt a Road Route

☒ Montsweag Trail - Montsweag Woods Lane - Woolwich

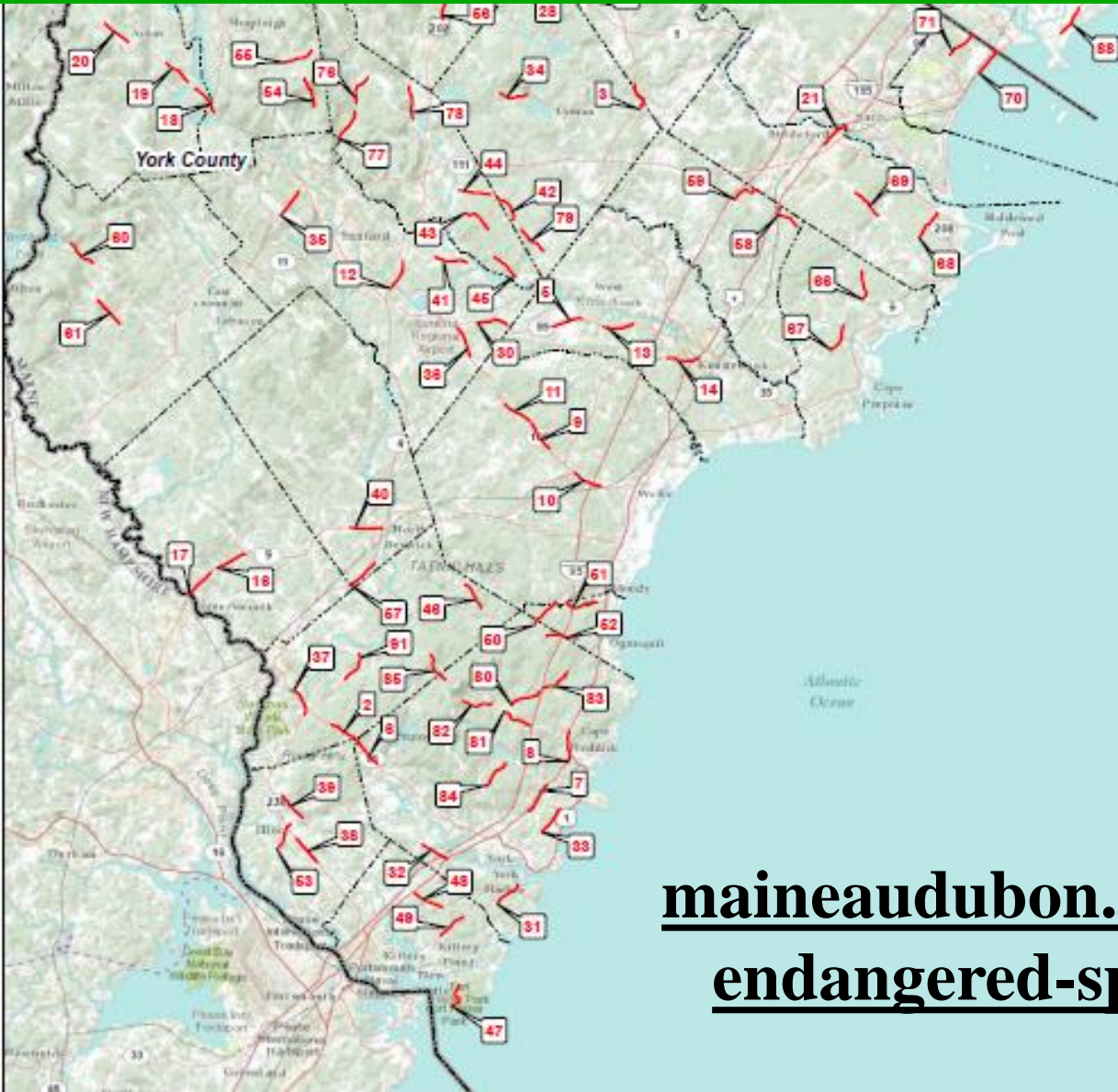
Please check just one route.



Species At Risk from Roads



Endangered Species Road Watch

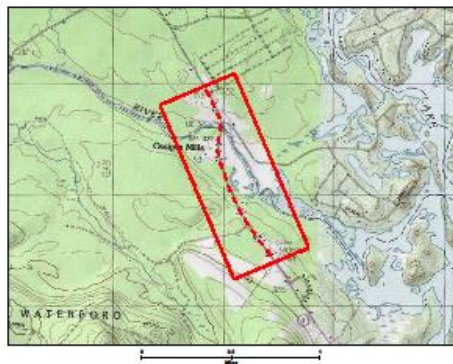
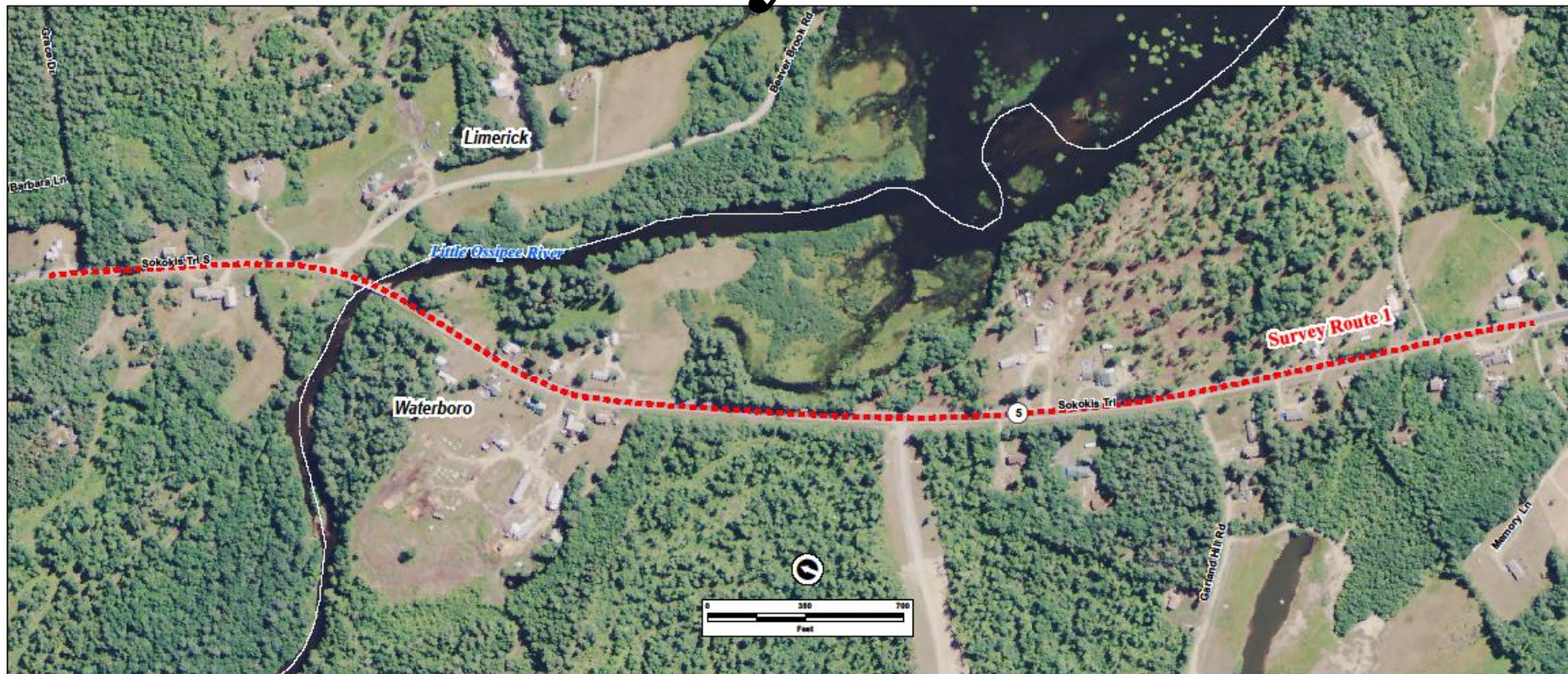


[maineaudubon.org/wildlife-habitat/
endangered-species-road-watch/](http://maineaudubon.org/wildlife-habitat/endangered-species-road-watch/)

ESRW Training Workshop



Endangered Species Survey Route



Name:

Survey Date:

Mark your observations on the map with numbers for each to indicate specific locations. Record details for each observation with corresponding number on the datasheet on the back of this map.

LEGEND

- Wildlife Road Watch Survey Route
- State Boundary
- County Boundary
- Town Boundary

Data Sources: Maine Department of Transportation, Maine Department of Inland Fisheries and Wildlife, Maine Office of GIS, US Geological Survey, US Department of Agriculture - National Agricultural Imagery Program (NAIP) 2011. Projection: NAD83, UTM Zone 18N, Grid North.

MAINE
AUDUBON



MAINE
DOT

Wildlife Road Watch Survey Route 1

Rt. 5/Sokokis Trail
Limerick/Waterboro, Maine

Printed: 2/28/2012

This Project is supported by TogetherGreen, an Audubon program with funding from Terra.

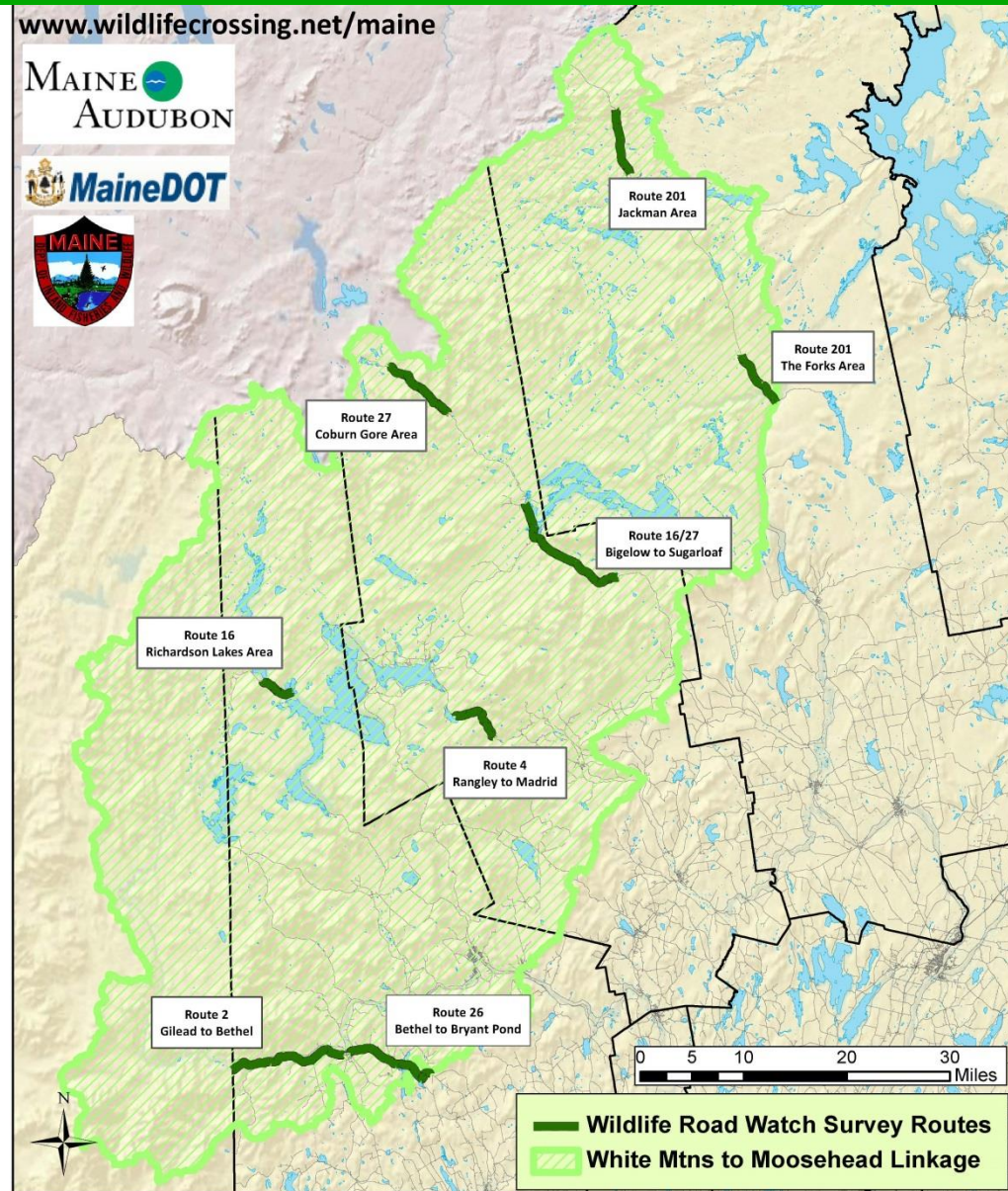
ESRW Survey Summary

- 2012 – 2014
- 60 volunteers
- 29 routes surveyed

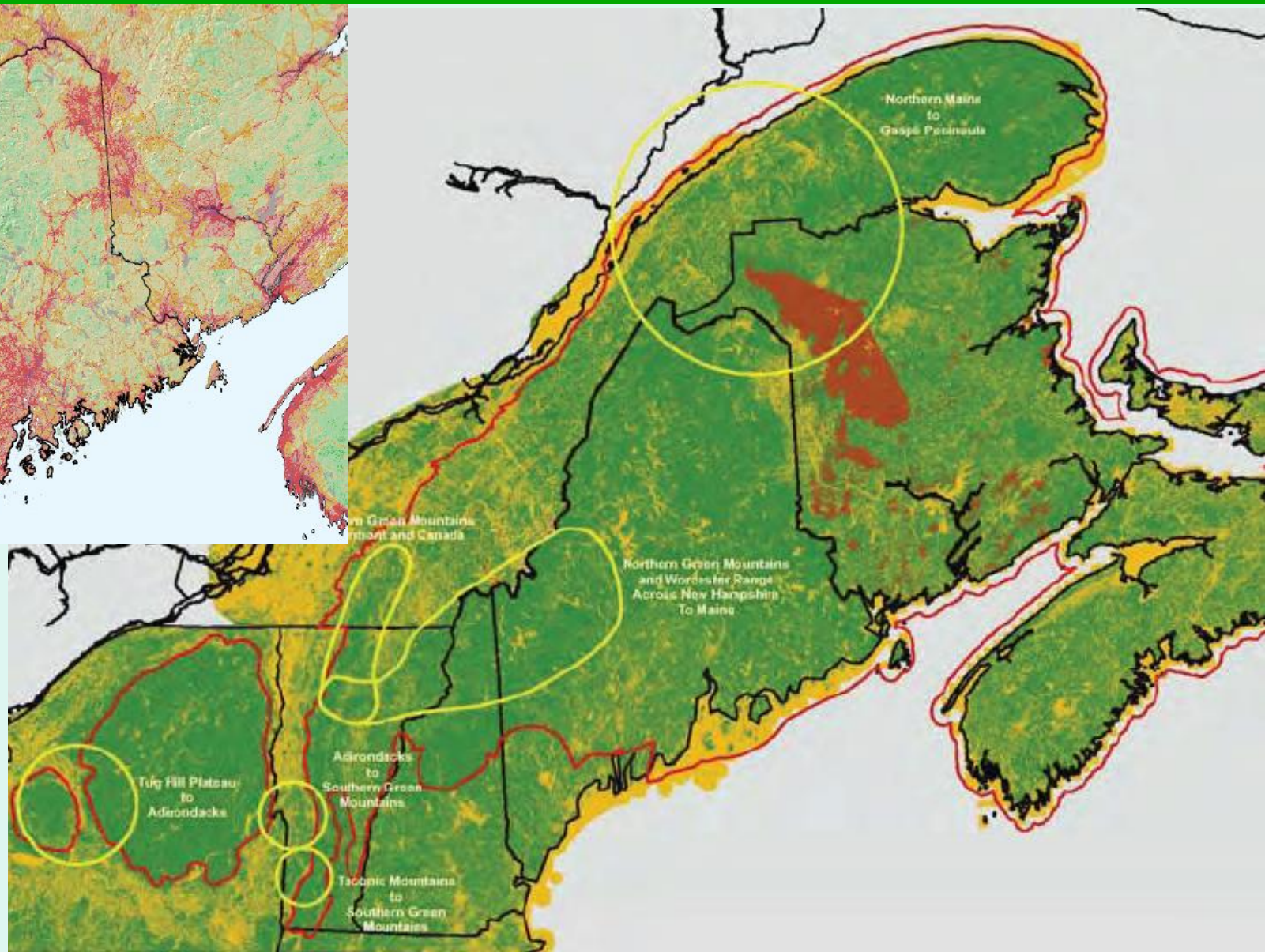
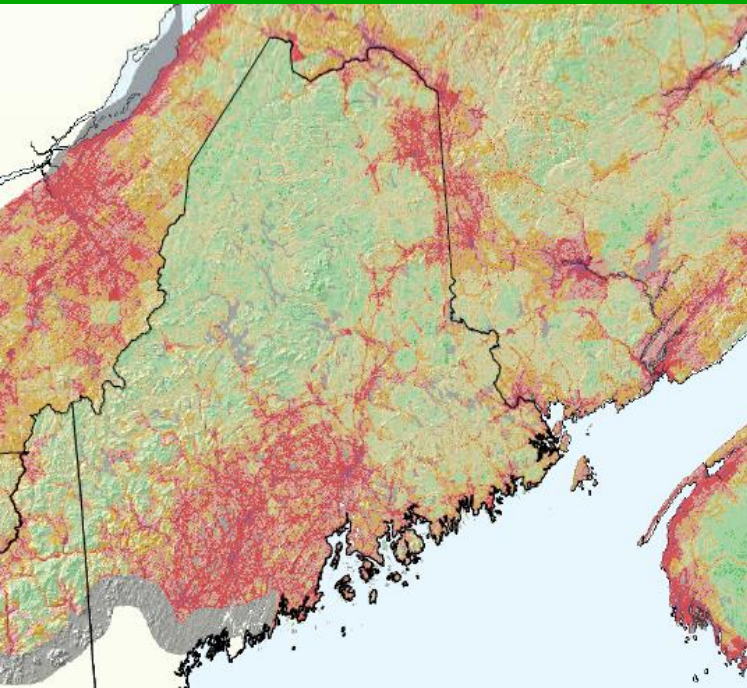


Western Mountains Routes

- Winter tracking
- WRW volunteer surveys
- Culvert surveys



Why Western Mountains

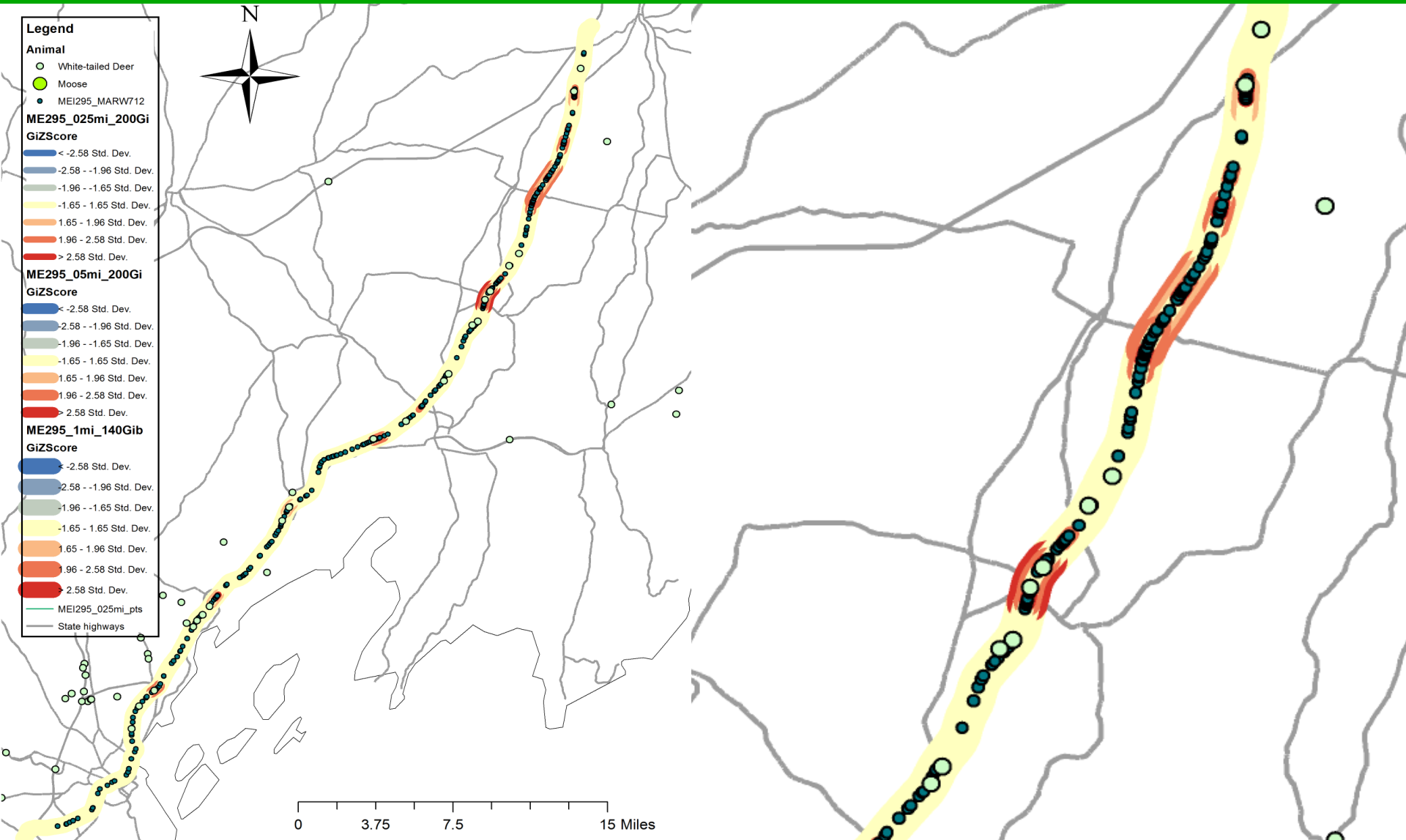


WRW Data Summary Through December 2014

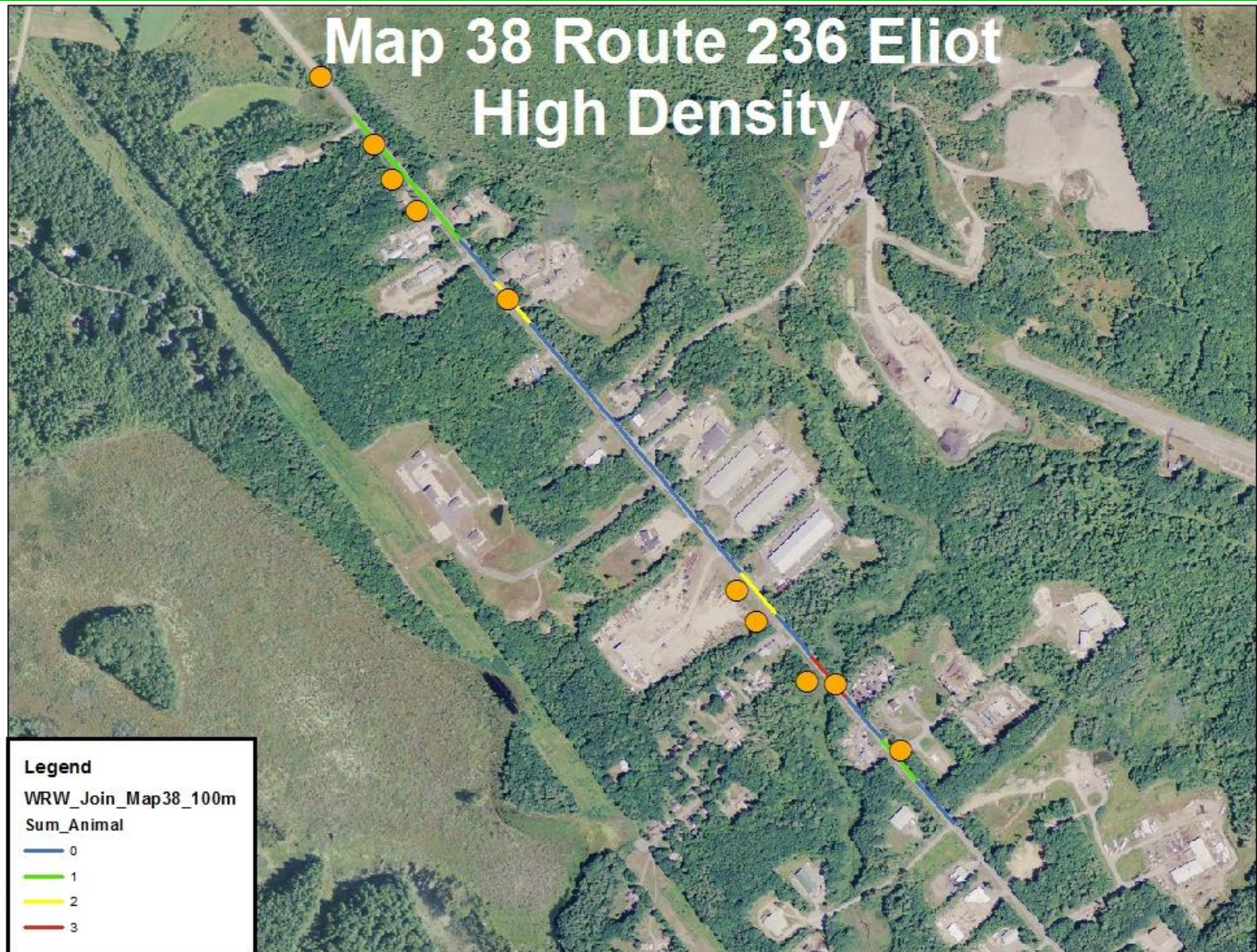
- >460 observers
- >4800 observations
 - 2/3 dead
 - 1/3 live
- >130 species
- 1/3 Maine's terrestrial vertebrates
- 2 Endangered Species (*Blanding's turtle* & *New England cottontail*)
- 6 Special Concern Species



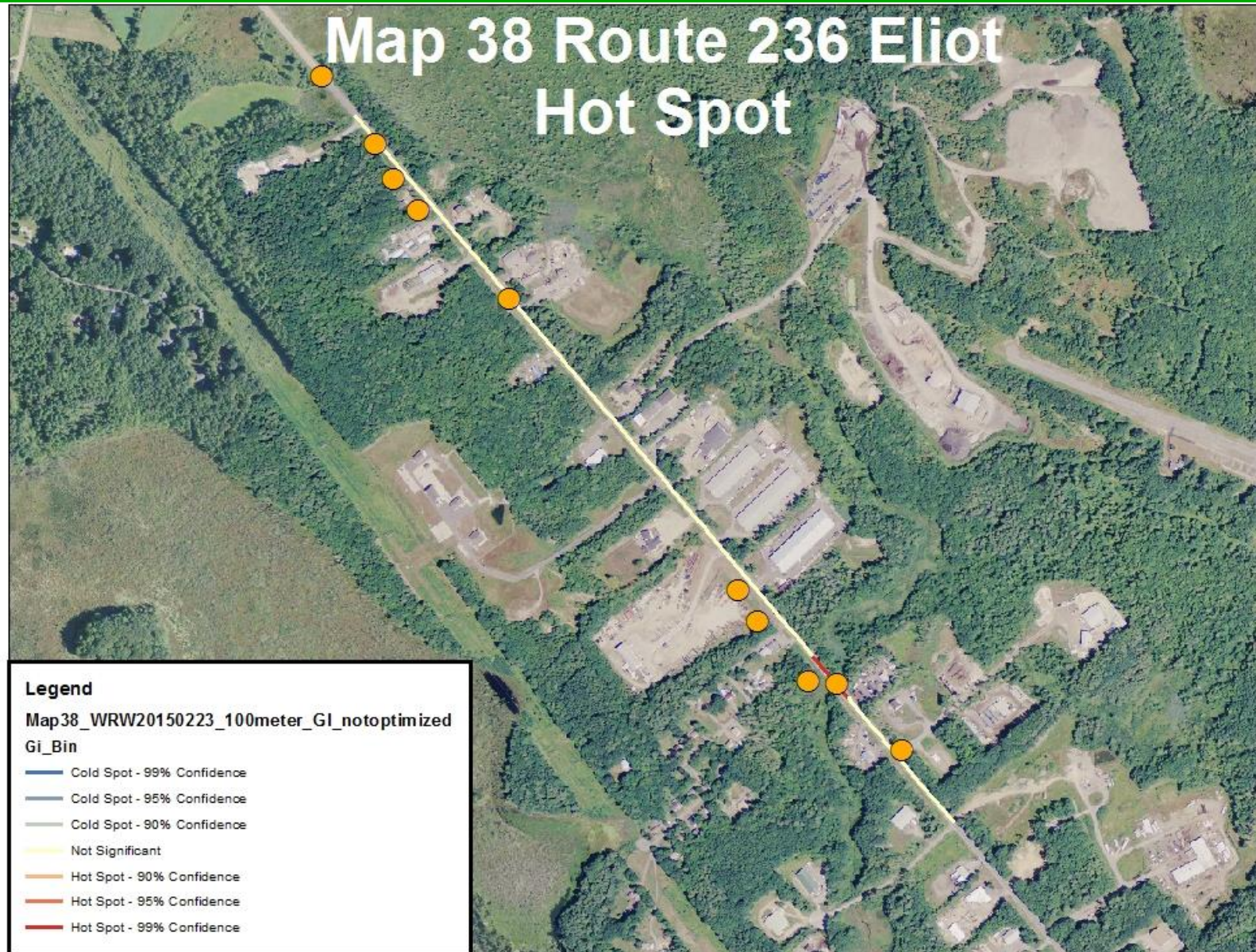
Analyzing the Data



Analyzing the Data



Analyzing the Data



Data Analysis Goals

- Habitat & Road Characteristics
- BWH Habitat Connector association

STAY TUNED.....



Informing Solutions



Lessons Learned

- Walking Routes Valuable

- » Walking vs Driving

- Amphibians 33% vs 4%
 - Birds 26% vs 17%
 - Reptiles 13% vs 7%
 - Mammals 28% vs 71%



- Volunteer Recruitment Time Consuming
- Multiple Years Walking Surveys

Citizen Scientist in Action!



Wildlife Road Watch Partners

wildlifecrossing.net/maine/



- Barbara Charry, *Maine Audubon*
bcharry@maineaudubon.org



- Fraser Shilling, *UCDavis Road Ecology Center* fmshilling@ucdavis.edu



- Derek Yorks, *Maine Inland Fisheries & Wildlife* Derek.Yorks@maine.gov



- Richard Bostwick, *Maine Department of Transportation* richard.bostwick@maine.gov

Supported By:

