



MAINE AUDUBON

Wildlife Road Watch

Citizen Scientist Observations
2010-2014

WRW Summary

- 460 volunteers
- 4800 observations – 6800 individual animals
- 60% dead animals/40% live animals
- 153 different species
 - Mammals 57%
 - Birds 27%
 - Amphibians 10%
 - Reptiles 4%

Data Analysis

- *High density locations* - crossing attempts occur more frequently
- *Hotspots* - where there are statistically-significant clusters of crossing attempts
- Both *high density locations* & *hotspots* are important for understanding & planning for wildlife movement
- Where *high density locations* & *hotspots* overlap are especially important

Roads Analyzed



I-95 South (N. Scarborough to S. Falmouth)

I-95 North of I-295 to Alton

I-295

Route 4/16

Route 27/9

Route 17/126

Route 139/202/100A

Route 127

Route 128

Route 116

Route 1

Common Landscape Characteristics

- **Interstate on/off ramp intersections with wetlands, streams and rivers**
- Road **bisects** large wetland & **stream complexes**
- **Road stream crossings**
- **Road runs parallel to rivers, lakes, large wetlands**
- Highways with large (100s ft wide) wooded medians

Map 2 of 2

I-295

53 miles with 382 observations
(7.2 observations/mile)

High Density Locations & Hotspots Overlap

Brunswick Route 1 Interchange

Bowdoinham (Exit 37 Interchange Route 125 to North of Milley Road)

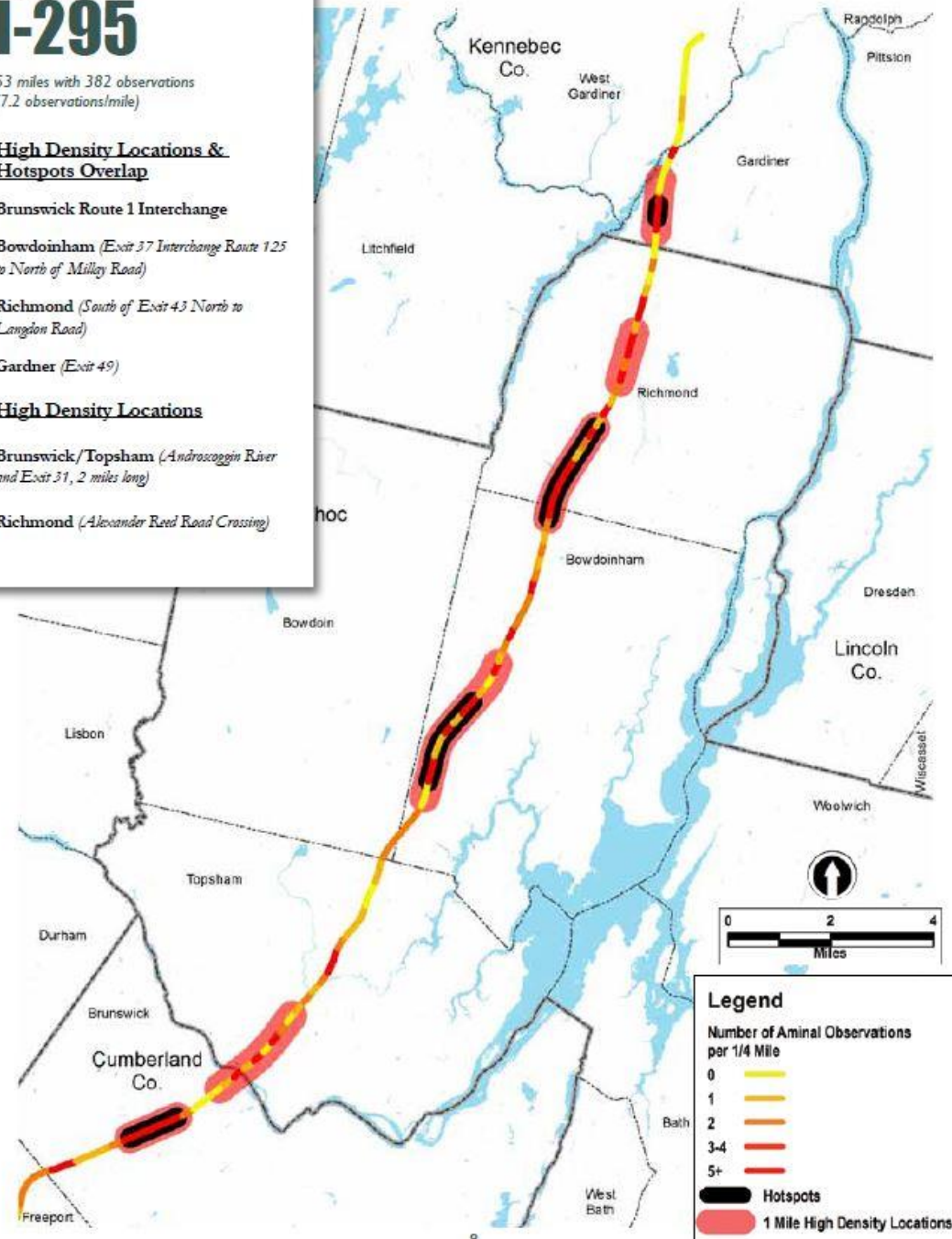
Richmond (South of Exit 43 North to Langdon Road)

Gardner (Exit 49)

High Density Locations

Brunswick/Topsham (Androscoggin River and Exit 31, 2 miles long)

Richmond (Alexander Reed Road Crossing)

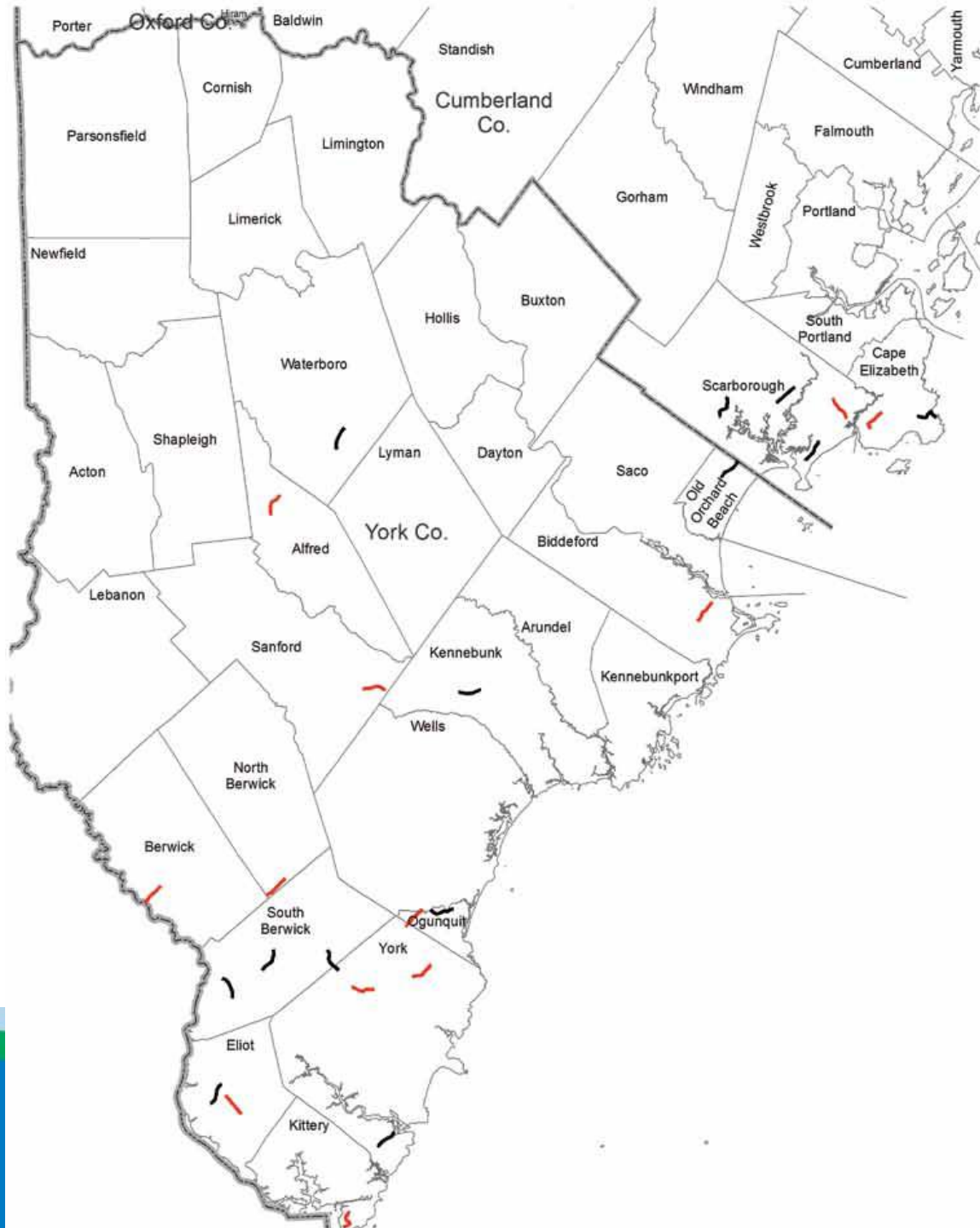


Endangered Species Road Watch

- 2012, 2013, 2014 volunteers surveyed 1-mile walking routes
- 25 routes surveyed
- 12 routes enough observations to analyze
- 100 meter *High Density locations*
- *Hotspots* length varied

ESRW Routes Surveyed

- 12 red segments analyzed
- 13 black segments not analyzed due to low numbers of wildlife observations
- Note: problem locations for wildlife may still occur, but were not determined



ESRW Map

Eliot

Harold L. Dow Highway



Legend

Number of Animal Observations
per 50 Meters (165 feet)



Hotspots

High Density Locations



MAINE  AUDUBON

Wildlife Road Watch Results

Interactive Web Map

View all identified High Density and Hotspot locations and surrounding landscape characteristics

Go to:

maineaudubon.org/roadwatch