

Implementing Eco-Logical: Putting an Ecosystem Approach to Developing Infrastructure into Practice

Moderator

Marlys Osterhues, Federal Highway Administration, Office of Project Development and Environmental Review

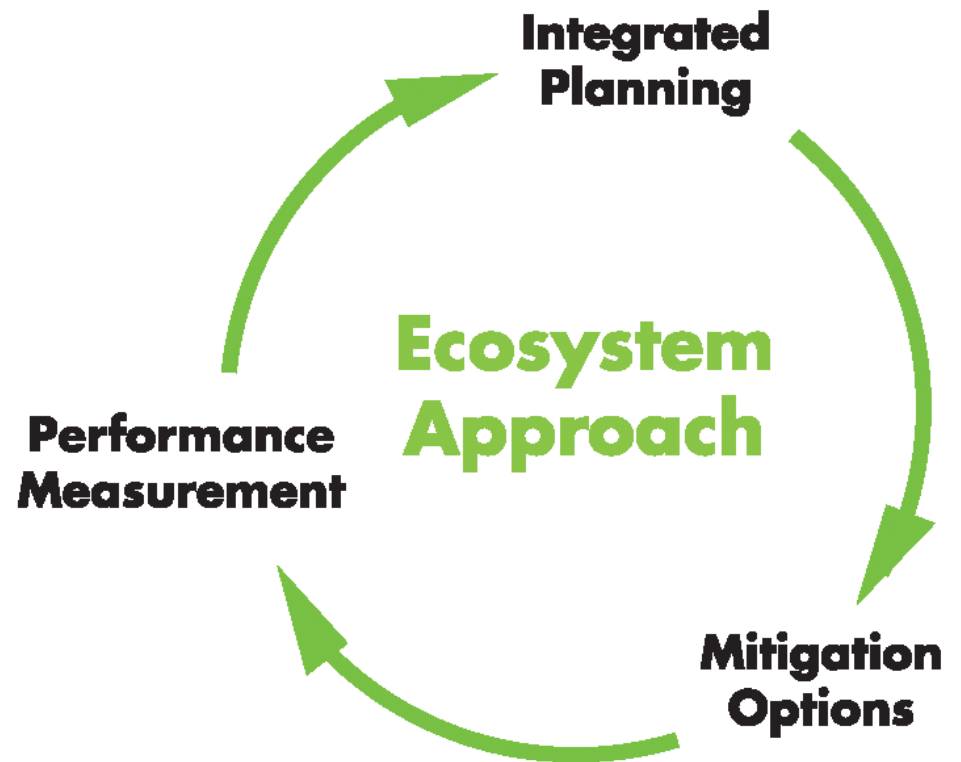
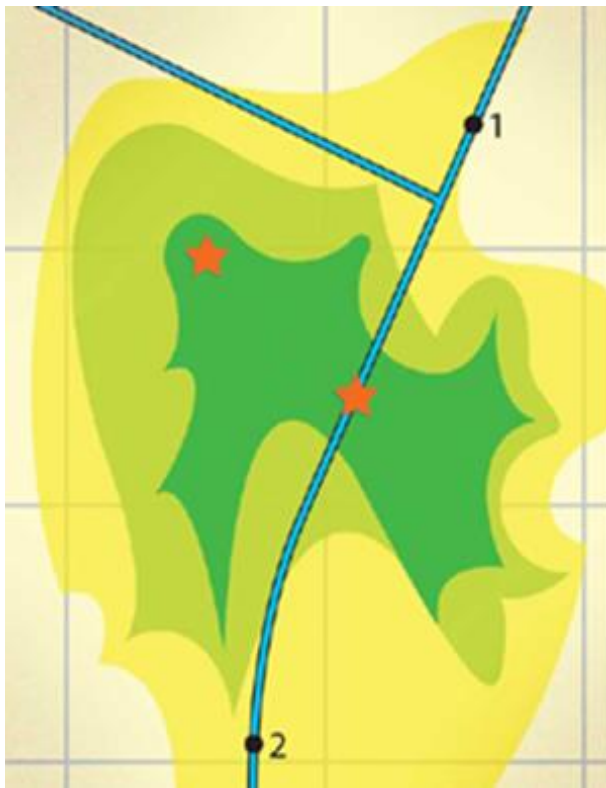
Presenters

Tim Dexter, MassDOT

Judy Gates, MaineDOT

Julianne Schwarzer, USDOT Volpe Center

The Eco-Logical Approach



Images: Eco-Logical, 2006

Implementing Eco-Logical



Photo: FHWA

- A suite of SHRP2 projects aimed at operationalizing the Eco-Logical approach
- These products were tested through four pilots in Colorado, West Virginia, California and Oregon
- \$1 million in SHRP2 funds were used to develop an interagency data tool that will overcome a major barrier to implementation
- Approx. \$3 million in SHRP2 funds are currently being used to implement the Eco-Logical approach nationwide

Integrated Eco-Logical Framework (IEF)

- Process to guide transportation and resource specialists in the integration of transportation and ecological decisionmaking.
- Helps identify potential impacts to environmental resources very early in the planning process.

Steps of the IEF (and the Eco-Logical approach)

- 1. Build and strengthen collaborative partnerships**
- 2. Integrate natural environment plans**
- 3. Create a Regional Ecosystem Framework (REF)**
- 4. Assess effects on conservation objectives**
- 5. Establish and prioritize ecological actions**
- 6. Develop crediting strategy**
- 7. Develop programmatic consultation, biological opinion, or permit**
- 8. Implement agreements, adaptive management, and deliver projects**
- 9. Update REF**

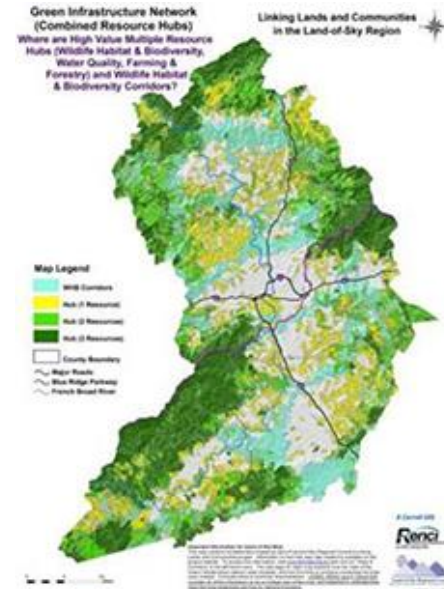
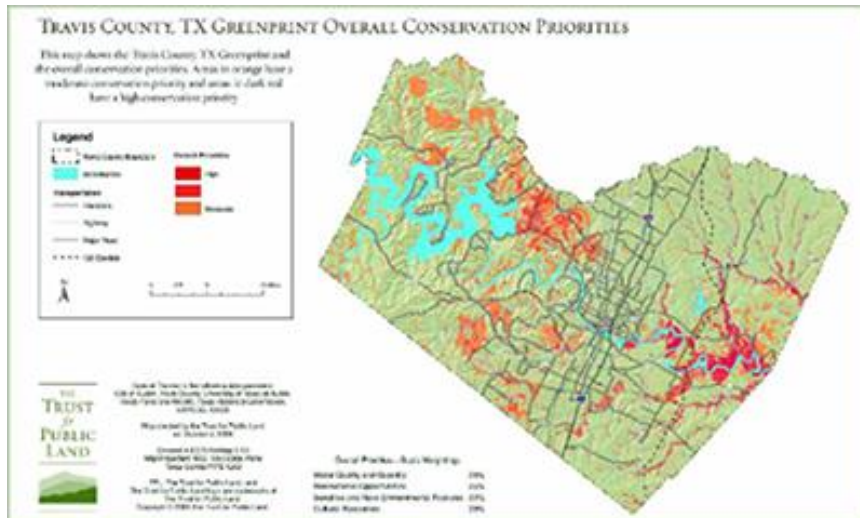
Partner
Share Data
Analyze Effects

Identify key sites
and actions

Document
Implement
Evaluate

Steps 1-4: Partner, Share Data, Analyze Effects

1. Build and strengthen collaborative partnerships
2. Integrate natural environment plans
3. Create a Regional Ecosystem Framework (REF)
4. Assess effects on conservation objectives



Images: CAPCOG and LOSRC

Steps 5-6: Identify Key Sites and Actions

5. Establish and prioritize ecological actions
6. Develop crediting strategy



Photos: FHWA

Steps 7-9: Document, Implement, Evaluate

7. Develop programmatic consultation, biological opinion, or permit
8. Implement agreements, adaptive management, and deliver projects
9. Update REF



Image: H-GAC



Photo: City of Chicago

Implementing Eco-Logical Resources

- Implementation Assistance Program
- Starter Kit
- Practitioner's Handbook
- On-Call Technical Assistance Team
- Case Studies
- Peer Exchanges
- Workshops
- Champions
- SHRP2 C40A Eco-Plan testing

Contact Information

David Williams
Federal Highway Administration –
Resource Center

david.williams@dot.gov

410-962-2482

Julianne Schwarzer
USDOT Volpe Center

julianne.schwarzer@dot.gov

617-494-3259



Photo: FHWA